

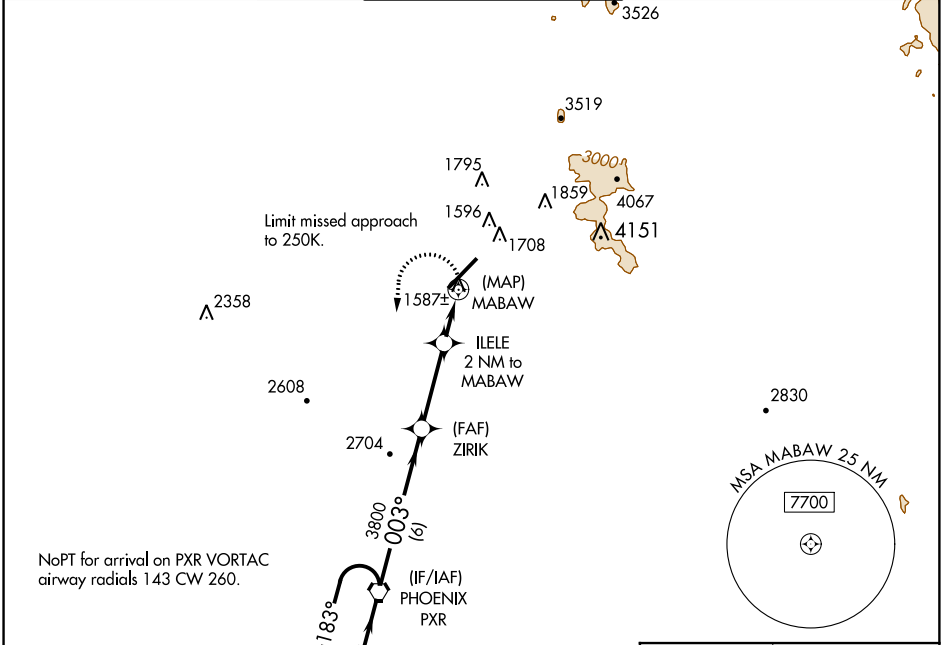
RNAV (GPS)-E
SCOTTSDALE (SDL)

APP CRS 003°	Rwy Idg TDZE Apt Elev	N/A N/A 1510
------------------------	-----------------------------	---

⚠ When VGSI inoperative, circling Rwy 21 NA at night. When local altimeter setting not received, use Phoenix Sky Harbor Intl altimeter setting and increase all MDA 100 feet and increase Cat B visibility ¼ mile; increase Cat C and D visibility ½ mile. DME/DME RNP-0.3 NA.

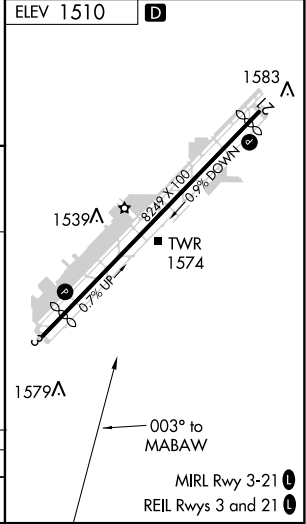
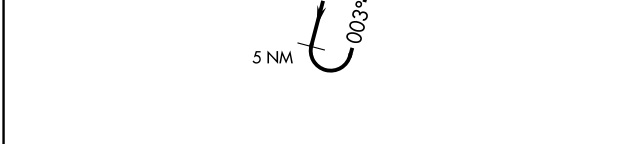
MISSED APPROACH: Climbing left turn to 4200 direct PXR VORTAC and hold.

ATIS 118.6	PHOENIX APP CON 120.7 239.0	SCOTTSDALE TOWER ★ 119.9 (CTAF) 0	GND CON 121.6	CLNC DEL 124.8
----------------------	---------------------------------------	--	-------------------------	--------------------------



SW-4, 12 OCT 2017 to 09 NOV 2017

SW-4, 12 OCT 2017 to 09 NOV 2017



CATEGORY	A	B	C	D
	2140-1	630 (700-1)	2140-2	630 (700-2)

CIRCLING	2140-1	630 (700-1)	2140-2	630 (700-2)
----------	--------	-------------	--------	-------------