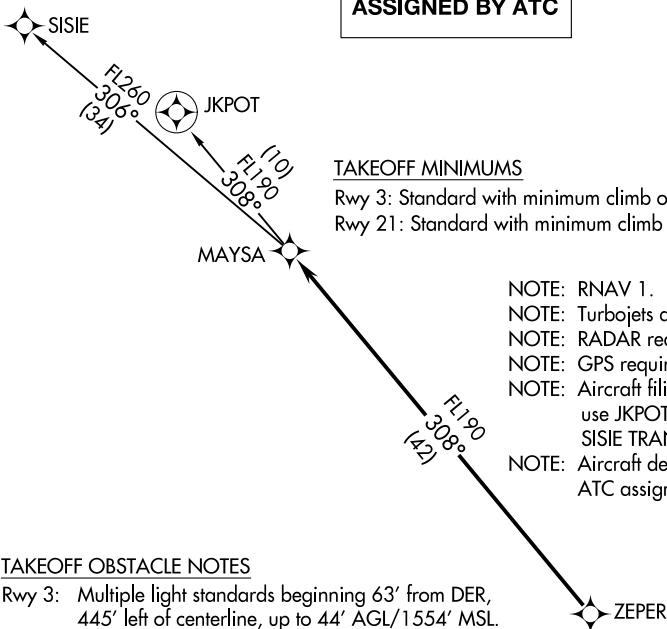


**TOP ALTITUDE:  
ASSIGNED BY ATC**

ATIS  
118.6  
CLNC DEL  
124.8  
GND CON  
121.6  
SCOTTSDALE TOWER\*  
119.9  
PHOENIX DEP CON  
120.7 239.0



TAKEOFF MINIMUMS

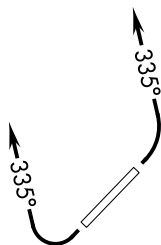
Rwy 3: Standard with minimum climb of 445' per NM to 4600.  
Rwy 21: Standard with minimum climb of 300' per NM to 4600.

- NOTE: RNAV 1.
- NOTE: Turbojets and turboprops only.
- NOTE: RADAR required.
- NOTE: GPS required.
- NOTE: Aircraft filing over EED, HEC, or PMD, use JKPOT TRANSITION, all others use SISIE TRANSITION.
- NOTE: Aircraft departing KGEU and KGYR ATC assigned only.

TAKEOFF OBSTACLE NOTES

Rwy 3: Multiple light standards beginning 63' from DER, 445' left of centerline, up to 44' AGL/1554' MSL. Hoist on dike 878' from DER, 735' left of centerline, 51' AGL/1561' MSL. Dike beginning 1066' from DER, 316' left of centerline, 38' AGL/1548' MSL. Day marker on dike 1230' from DER, 5' left of centerline, 39' AGL/1549' MSL. Tree 765' from DER, 115' left of centerline, 22' AGL/1532' MSL. Road beginning 647' from DER, 296' left of centerline, 19' AGL/1529' MSL. Fence beginning 5' from DER, 338' right of centerline, 6' AGL/1511' MSL. Light standard 1013' from DER, 430' right of centerline, 44' AGL/1552' MSL.

Rwy 21: Trees 1072' from DER, 426' right of centerline, 53' AGL/1497' MSL. Building 316' from DER, 537' right of centerline, 23' AGL/1467' MSL. Tree 2087' from DER, 418' left of centerline, 61' AGL/1505' MSL. Tree 1432' from DER, 438' right of centerline, 38' AGL/1482' MSL. Tree 2234' from DER, 559' left of centerline, 58' AGL/1502' MSL.



NOTE: Chart not to scale.

**DEPARTURE ROUTE DESCRIPTION**

TAKEOFF RUNWAY 3: Climbing left turn heading 335° or as assigned by ATC. Thence. . . .

TAKEOFF RUNWAY 21: Climbing right turn heading 335° or as assigned by ATC. Thence. . . .

. . . .expect RADAR vectors to ZEPER, then on track 308° to MAYSA. Then on (transition), expect filed altitude 3 minutes after departure.

JKPOT TRANSITION (MAYSA5.JKPOT)

SISIE TRANSITION (MAYSA5.SISIE)