

SW-4, 12 OCT 2017 to 09 NOV 2017

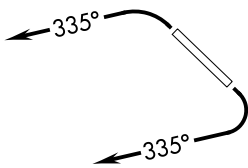
TAKEOFF OBSTACLE NOTES

Rwy 3: Multiple light standards beginning 63' from DER, 445' left of centerline, up to 44' AGL/1554' MSL.
 Hoist on dike 878' from DER, 735' left of centerline, 51' AGL/1561' MSL.
 Dike beginning 1066' from DER, 316' left of centerline, 38' AGL/1548' MSL.
 Day marker on dike 1230' from DER, 5' left of centerline, 39' AGL/1549' MSL.
 Tree 765' from DER, 115' left of centerline, 22' AGL/1532' MSL.
 Road beginning 647' from DER, 296' left of centerline, 19' AGL/1529' MSL.
 Fence beginning 5' from DER, 338' right of centerline, 6' AGL/1511' MSL.
 Light standard 1013' from DER, 430' right of centerline, 44' AGL/1552' MSL.
 Rwy 21: Trees 1072' from DER, 426' right of centerline, 53' AGL/1497' MSL.
 Building 316' from DER, 537' right of centerline, 23' AGL/1467' MSL.
 Tree 2087' from DER, 418' left of centerline, 61' AGL/1505' MSL.
 Tree 1432' from DER, 438' right of centerline, 38' AGL/1482' MSL.
 Tree 2234' from DER, 559' left of centerline, 58' AGL/1502' MSL.

ATIS 118.6
 CLNC DEL 124.8
 GND CON 121.6
 SCOTTSDALE TOWER * 119.9
 PHOENIX DEP CON 120.7 239.0

TAKEOFF MINIMUMS

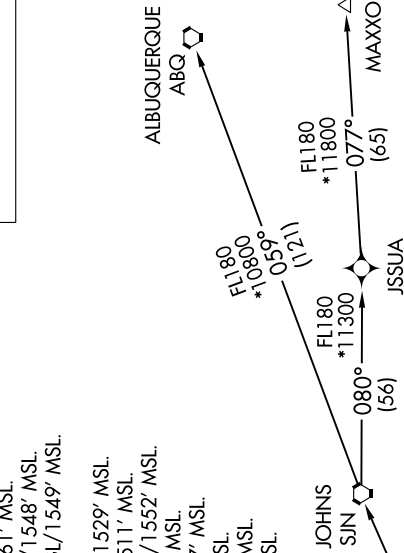
Rwy 3: Standard with minimum climb of 445' per NM to 4600.
 Rwy 21: Standard with minimum climb of 300' per NM to 4600.



NOTE: RNAV 1.
 NOTE: Turbojets and turboprops only.
 NOTE: RADAR required.
 NOTE: GPS required.

NOTE: SJN TRANSITION for ABQ terminal arrivals only.
 NOTE: MAXXO TRANSITION ATC assigned only.
 NOTE: Aircraft filing over DEN, RSK, ALS, and points north of ALS, file YOTES DEPARTURE.
 NOTE: Aircraft filing over ABQ, CIM, FTI, and GCK, file LALUZ DEPARTURE.
 NOTE: Aircraft filing over ACH, IBL, ONM, CNX, PNH, MMB, TCC, IRW and TXO, file FTHLS DEPARTURE.
 NOTE: Aircraft departing KGEU and KGYR ATC assigned only.

**TOP ALTITUDE:
ASSIGNED BY ATC**



NOTE: Chart not to scale.

DEPARTURE ROUTE DESCRIPTION

TAKEOFF RUNWAY 3: Climbing left turn heading 335° or as assigned by ATC. Thence, . . .
TAKEOFF RUNWAY 21: Climbing right turn heading 335° or as assigned by ATC. Thence, . . .

. . . expect RADAR vectors to FORPE, then on track 055° to LALUZ. Then on (transition), expect filed altitude 3 minutes after departure.

ALBUQUERQUE TRANSITION (LALUZ5.ABQ)
MAXXO TRANSITION (LALUZ5.MAXXO)
ST JOHNS TRANSITION (LALUZ5.SJN)

SW-4, 12 OCT 2017 to 09 NOV 2017