

SW-4, 12 OCT 2017 to 09 NOV 2017

DEPARTURE ROUTE DESCRIPTION

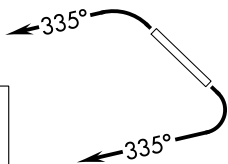
**TAKEOFF RWY 3:** Climbing left turn heading 335° or as assigned by ATC.  
Thence. . . .

**TAKEOFF RWY 21:** Climbing right turn heading 335° or as assigned by ATC. Thence. . . .  
. . . . expect RADAR vectors to GBN VORTAC, then on track 249° to JUDTH.  
Then on (transition), expect filed altitude 3 minutes after departure.

MOHAK TRANSITION (JUDTH6..MOHAK)

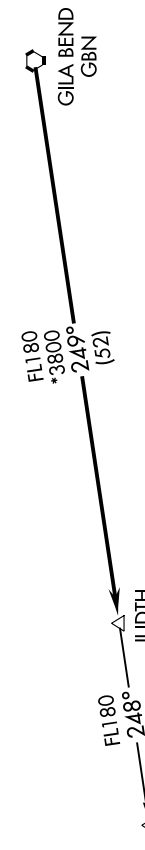
- ATIS 118.6
- CLNC DEL 124.8
- GND CON 121.6
- SCOTTSDALE TOWER\* 119.9
- PHOENIX DEP CON 120.7 239.0

**TOP ALTITUDE:  
ASSIGNED BY ATC**



**TAKEOFF OBSTACLE NOTES**

- Rwy 3:** Multiple light standards beginning 63' from DER, 445' left of centerline, up to 44' AGL/1554' MSL. Hoist on dike 878' from DER, 735' left of centerline, 51' AGL/1561' MSL.  
Dike beginning 1066' from DER, 316' left of centerline, 38' AGL/1548' MSL.  
Day marker on dike 1230' from DER, 5' left of centerline, 39' AGL/1549' MSL.  
Tree 765' from DER, 115' left of centerline, 22' AGL/1532' MSL.  
Road beginning 647' from DER, 296' left of centerline, 19' AGL/1529' MSL.  
Fence beginning 5' from DER, 338' right of centerline, 6' AGL/1511' MSL.  
Light standard 1013' from DER, 430' right of centerline, 44' AGL/1552' MSL.  
Trees 1072' from DER, 426' right of centerline, 53' AGL/1497' MSL.  
Building 316' from DER, 537' right of centerline, 23' AGL/1467' MSL.  
Tree 2087' from DER, 418' left of centerline, 61' AGL/1505' MSL.  
Tree 1432' from DER, 438' right of centerline, 38' AGL/1482' MSL.  
Tree 2234' from DER, 559' left of centerline, 58' AGL/1502' MSL.
- Rwy 21:**



- NOTE:** RNAV 1.  
**NOTE:** Turbojets and turboprops only.  
**NOTE:** RADAR required.  
**NOTE:** GPS required.  
**NOTE:** Aircraft departing KGEU and KGYR ATC assigned only.

**TAKEOFF MINIMUMS**

- Rwy 3:** Standard with minimum climb of 445' per NM to 4600.  
**Rwy 21:** Standard with minimum climb of 300' per NM to 4600.

NOTE: Chart not to scale.

SW-4, 12 OCT 2017 to 09 NOV 2017