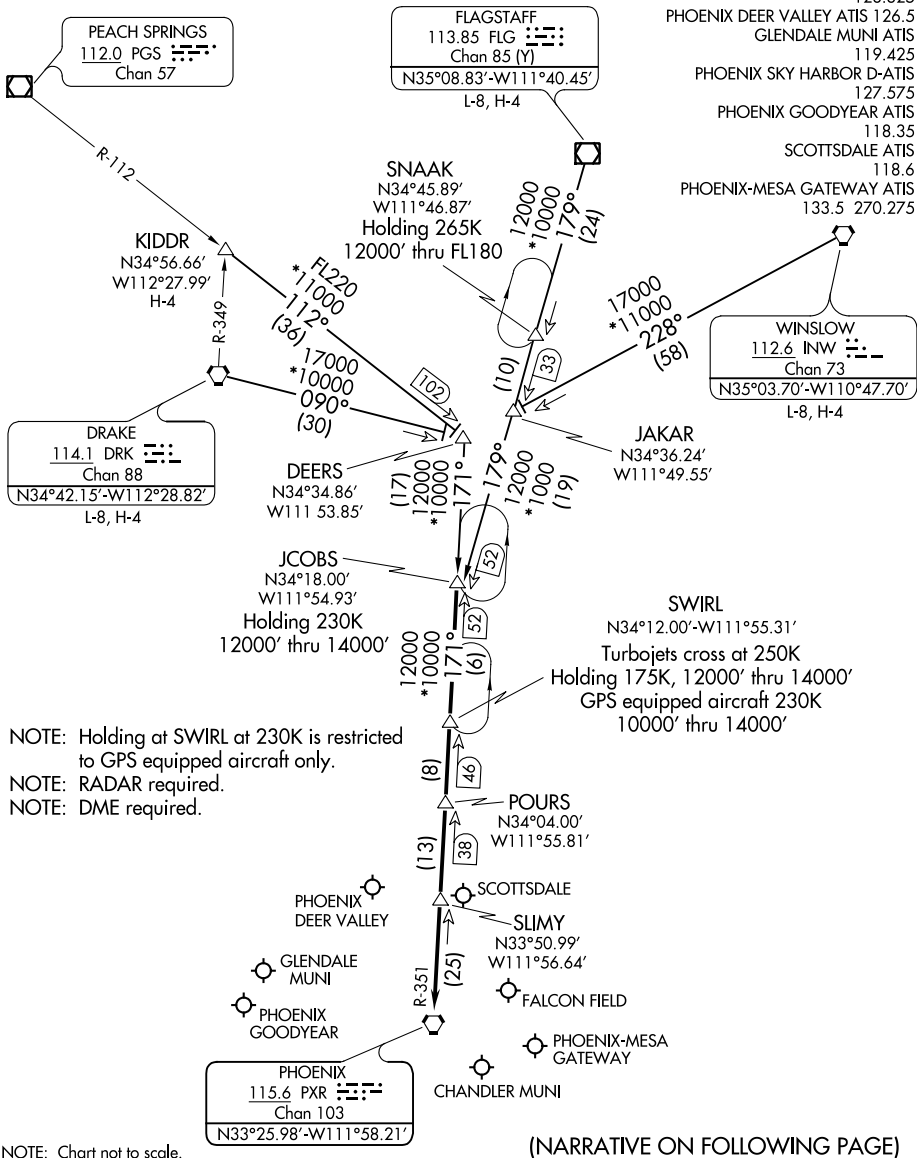


- PHOENIX APP CON 120.7 239.0
- DEER VALLEY TOWER ★ 118.4 (ARR 070°-250°) 120.2 (ARR 251°-069°)
- FALCON TOWER ★ 124.6
- SCOTTSDALE TOWER ★ 119.9
- CHANDLER MUNI ATIS 128.325
- PHOENIX DEER VALLEY ATIS 126.5
- GLENDALE MUNI ATIS 119.425
- PHOENIX SKY HARBOR D-ATIS 127.575
- PHOENIX GOODYEAR ATIS 118.35
- SCOTTSDALE ATIS 118.6
- PHOENIX-MESA GATEWAY ATIS 133.5 270.275



NOTE: Holding at SWIRL at 230K is restricted to GPS equipped aircraft only.  
 NOTE: RADAR required.  
 NOTE: DME required.

NOTE: Chart not to scale.

(NARRATIVE ON FOLLOWING PAGE)

SW-4, 12 OCT 2017 to 09 NOV 2017

SW-4, 12 OCT 2017 to 09 NOV 2017