

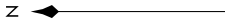
SW-4, 12 OCT 2017 to 09 NOV 2017

**TOP ALTITUDE:
ASSIGNED BY ATC**

TAKEOFF OBSTACLE NOTES

Rwy 3: Multiple light standards beginning 63' from DER, 445' left of centerline, up to 44' AGL/1554' MSL. Hoist on dike 878' from DER, 735' left of centerline, 51' AGL/1561' MSL. Dike beginning 1066' from DER, 316' left of centerline, 38' AGL/1548' MSL. Day marker on dike 1230' from DER, 5' left of centerline, 39' AGL/1549' MSL. Tree 765' from DER, 115' left of centerline, 22' AGL/1532' MSL. Road beginning 647' from DER, 296' left of centerline, 19' AGL/1529' MSL. Fence beginning 5' from DER, 338' right of centerline, 6' AGL/1511' MSL. Light standard 1013' from DER, 430' right of centerline, 44' AGL/1552' MSL.

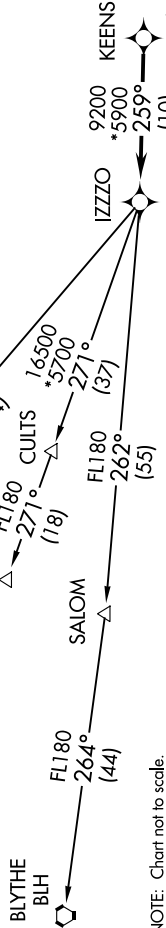
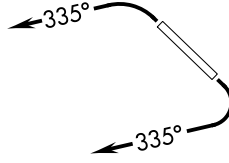
Rwy 21: Trees 1072' from DER, 426' right of centerline, 53' AGL/1497' MSL. Building 316' from DER, 537' right of centerline, 23' AGL/1467' MSL. Tree 2087' from DER, 418' left of centerline, 61' AGL/1505' MSL. Tree 1432' from DER, 438' right of centerline, 38' AGL/1482' MSL. Tree 2234' from DER, 559' left of centerline, 58' AGL/1505' MSL.



TAKEOFF MINIMUMS

Rwy 3: Standard with minimum climb of 445' per NM to 4600.

Rwy 21: Standard with minimum climb of 300' per NM to 4600.



NOTE: Chart not to scale.

DEPARTURE ROUTE DESCRIPTION

TAKEOFF RWY 3: Climbing left turn heading 335° or as assigned by ATC. Thence. . . .

TAKEOFF RWY 21: Climbing right turn heading 335° or as assigned by ATC. Thence. . . .

. . . . expect RADAR vectors to KEENS, then on track 259° to IZZO. Then on (transition), expect filed altitude 3 minutes after departure.

- BLYTHE TRANSITION (IZZO6.BLH)
- HRRBR TRANSITION (IZZO6.HRRBR)
- MESSI TRANSITION (IZZO6.MESSI)

- NOTE: RNAV 1.
- NOTE: Turbojets and turboprops only.
- NOTE: RADAR required.
- NOTE: GPS required.
- NOTE: Aircraft requesting FL220 and below must file BLYTHE TRANSITION.
- NOTE: Turbojets landing LAX, file MESSI TRANSITION.
- NOTE: Aircraft landing other than LAX and turboprops landing at LAX: Requesting FL240 and above, file HRRBR TRANSITION.
- NOTE: Aircraft departing KGEU and KGYR: ATC assigned only.

SW-4, 12 OCT 2017 to 09 NOV 2017