

APP CRS	Rwy Idg	3180
269°	TDZE	8
	Apt Elev	8

RNAV (GPS) RWY 28R

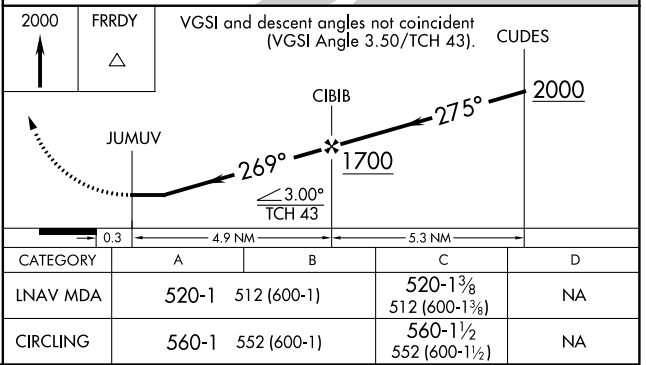
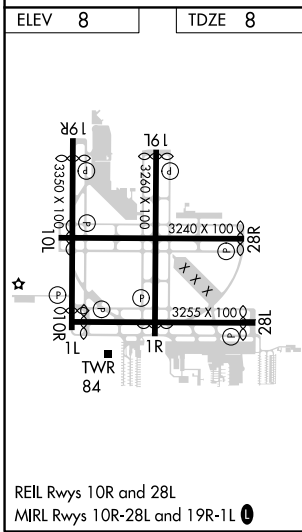
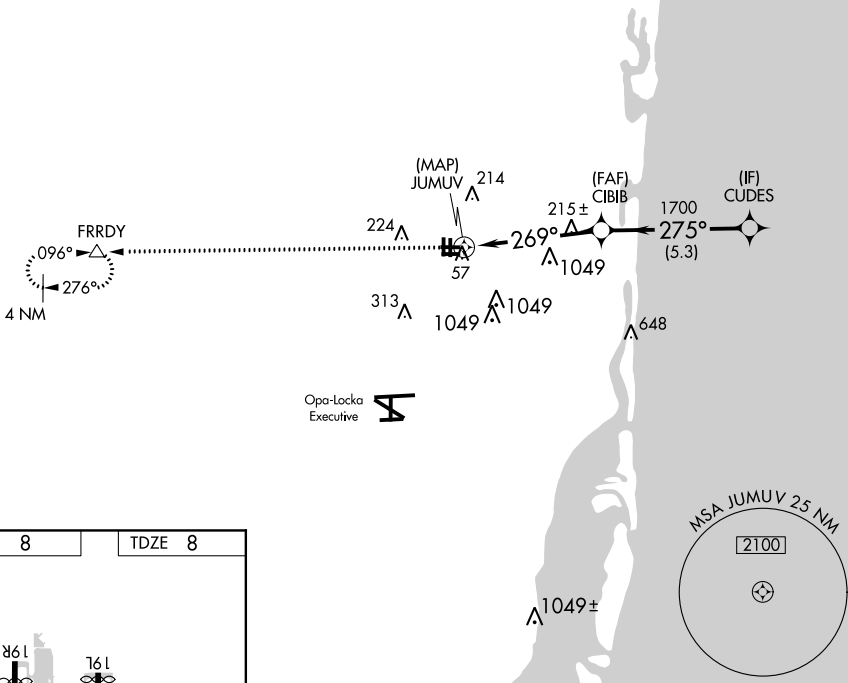
NORTH PERRY (HWO)

⚠ DME/DME RNP-0.3 NA. Helicopter visibility reduction below 3/4 SM NA. When local altimeter setting not received, use Fort Lauderdale/Hollywood Intl altimeter setting and increase all MDA 20 feet, increase LNAV Cat C visibility 1/8 mile. When VGSI inop, Circling Rwy 19L and 01R NA at night. Straight-in minimums NA at night.

⚠ MISSED APPROACH: Climb to 2000 direct FRRDY and hold.

ATIS 135.475	MIAMI APP CON 128.6 306.975	NORTH PERRY TOWER* 132.1 (CTAF) 0 254.3	GND CON 120.45 254.3	UNICOM 122.95
------------------------	---------------------------------------	---	--------------------------------	-------------------------

RADAR REQUIRED



SE-3, 12 OCT 2017 to 09 NOV 2017

SE-3, 12 OCT 2017 to 09 NOV 2017