


WAAS CH <b>42605</b> W05A	APP CRS <b>044°</b>	Rwy ldg TDZE <b>1276</b> Apt Elev <b>1276</b>
---------------------------------	------------------------	---

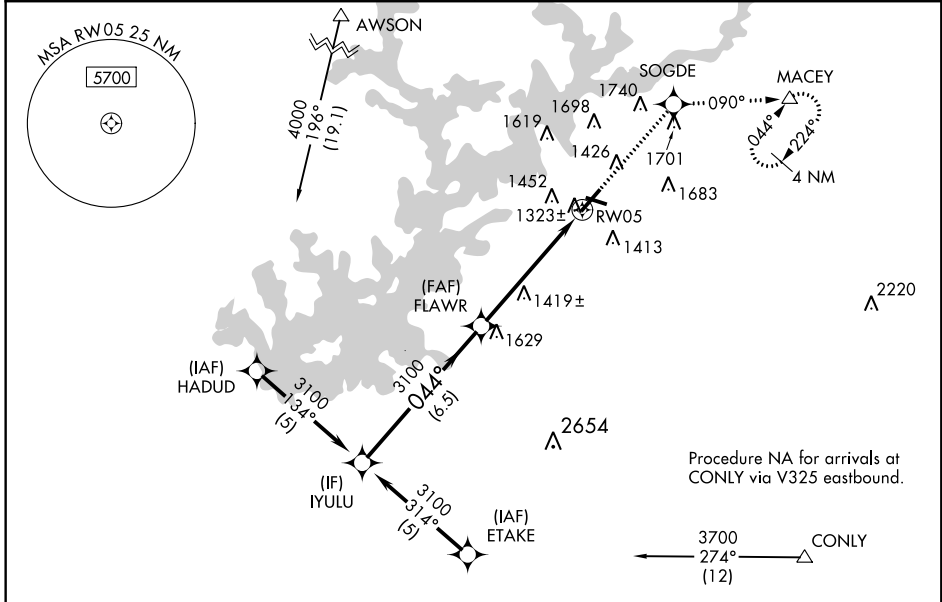
# RNAV (GPS) RWY 5

LEE GILMER MEMORIAL (GVL)

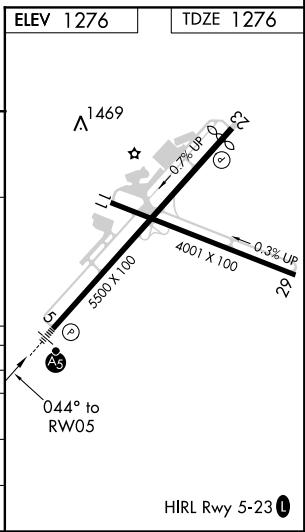
**⚠** For uncompensated Baro-VNAV systems, LNAV/VNAV NA below -17° C (2° F) or above 46° C (114° F). DME/DME RNP-0.3 NA. When local altimeter setting not received, use Jefferson altimeter setting and increase all DA/MDA 80 feet, LPV and LNAV/VNAV all Cats visibilities ¼ mile, LNAV Cat D visibility ½ mile and Circling Cat C and D visibility ¼ mile. Baro-VNAV and VDP NA when using Jefferson altimeter setting.

**MASLR**  
 MISSED APPROACH: Climb to 4000 direct SOGDE and via 090° track to MACEY and hold, continue climb-in-hold to 4000.

ASOS <b>126.475</b>	ATLANTA APP CON * <b>132.475 291.1</b>	GCO <b>121.725</b>	UNICOM <b>123.075 (CTAF)</b>
------------------------	---	-----------------------	---------------------------------



VGSi and RNAV glidepath not coincident (VGSi Angle 3.00/TCH 30).		4000	SOGDE	090° tr	MACEY
Procedure Turn NA	IYULU	FLAWR			
GP 3.00° TCH 43	3100	044°	3100	*1.5 NM to RW05	*LNAV only.
	6.5 NM		4 NM	1.5 NM	
CATEGORY	A	B	C	D	
LPV DA		1526-1	250 (300-1)		
LNAV/VNAV DA		1761-1¾	485 (500-1¾)		
LNAV MDA	1780-1	504 (600-1)	1780-1½	504 (600-1½)	
CIRCLING	1880-1	604 (700-1)	1880-1¾	2060-2½	784 (800-2½)



SE-4, 12 OCT 2017 to 09 NOV 2017

SE-4, 12 OCT 2017 to 09 NOV 2017