

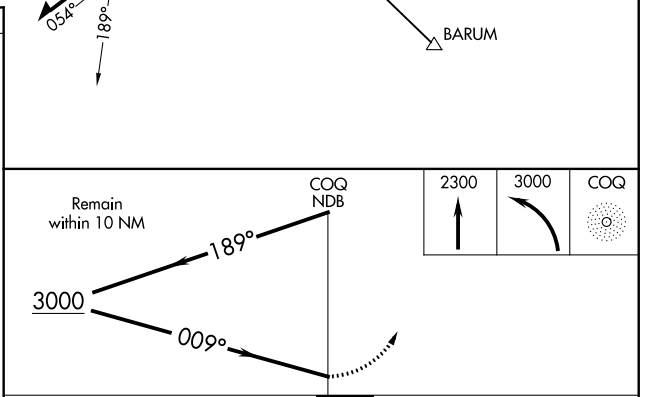
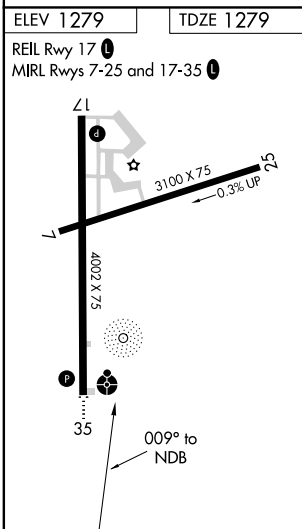
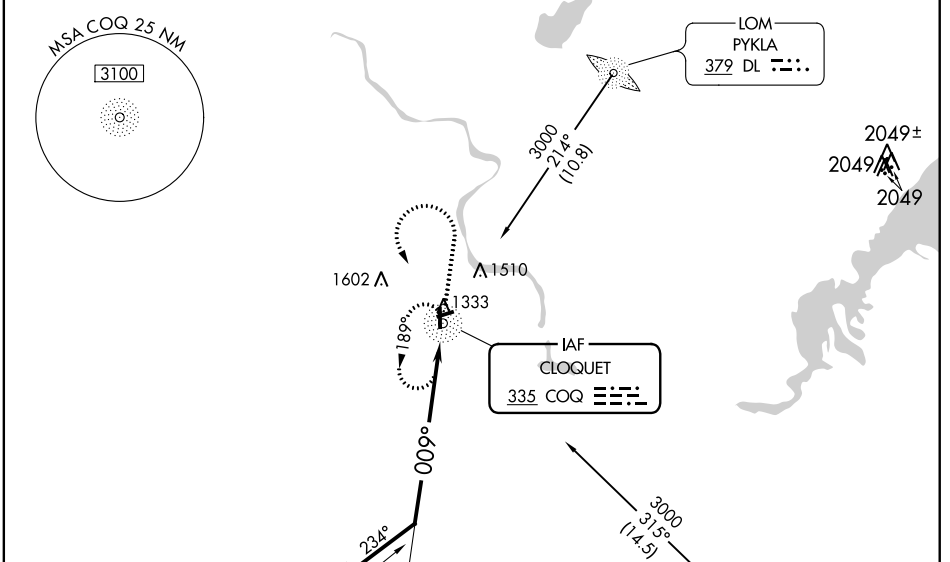
NDB COQ <b>335</b>	APP CRS <b>009°</b>	Rwy Idg TDZE Apt Elev	<b>4002</b> <b>1279</b> <b>1279</b>
-----------------------	------------------------	-----------------------------	---

**NDB RWY 35**  
CLOQUET CARLTON COUNTY (COQ)

**NA** When local altimeter setting not received, use Duluth Intl altimeter setting and increase all MDA 60 feet; increase S-35 and Circling Cat C visibility 1/8 mile. Inoperative table does not apply to S-35 Cat A/B. For inoperative ODALS, increase S-35 Cat C visibility to 1 3/4 mile. For inoperative ODALS when using Duluth Intl altimeter setting increase S-35 Cat C visibility to 1 1/8 mile. Night Landing: Rwy 7, 25 NA.

**ODALS** MISSED APPROACH: Climb to 2300 then climbing left turn to 3000 direct COQ NDB and hold, continue climb-in-hold to 3000.

AWOS-3 <b>118.525</b>	DULUTH APP CON <b>125.45 233.7</b>	CLNC DEL <b>122.15</b>	UNICOM <b>122.8 (CTAF)</b>
--------------------------	---------------------------------------	---------------------------	-------------------------------



CATEGORY	A	B	C	D
S-35	1860-1	581 (600-1)	1860-1 1/8 581 (600-1 1/8)	NA
CIRCLING	1860-1	581 (600-1)	1860-1 1/4 581 (600-1 1/4)	NA

NC-1, 12 OCT 2017 to 09 NOV 2017

NC-1, 12 OCT 2017 to 09 NOV 2017