

ATIS
 128.375
 CLNC DEL
 119.45
 GND CON
 121.8 239.0
 HOOKS TOWER★
 127.4 354.1 (EAST)
 118.4 (CTAF) 354.1 (WEST)
 HOUSTON DEP CON
 119.7 281.4

**TOP ALTITUDE:
 ASSIGNED BY ATC**

LITTLE ROCK
 113.9 LIT : : : :
 Chan 86
 N34°40.66'
 W92°10.83'
 L-18, H-6

NOTE: RADAR and DME required.
 NOTE: For aircraft destined LIT or
 overflying LIT or PXV.

LUFKIN
 112.1 LFK : : : :
 Chan 58
 N31°09.75'
 W94°43.01'

SKKIP
 N31°14.91'
 W94°39.45'

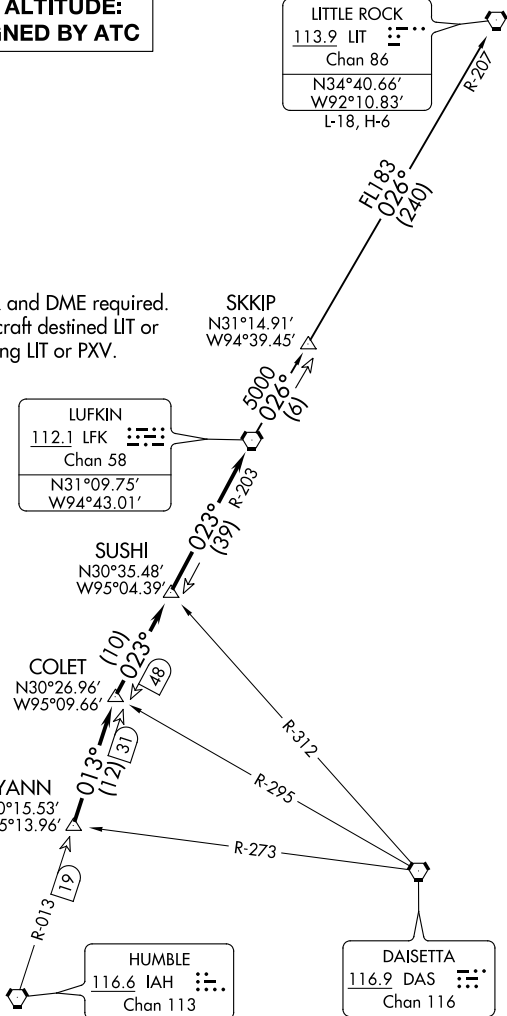
SUSHI
 N30°35.48'
 W95°04.39'

COLET
 N30°26.96'
 W95°09.66'

KYANN
 N30°15.53'
 W95°13.96'

HUMBLE
 116.6 IAH : : : :
 Chan 113

DAISETTA
 116.9 DAS : : : :
 Chan 116



TAKEOFF MINIMUMS

Rwys 17L, 35R: NA - Environmental.
 Waterways 17, 35: NA - Air Traffic.
 Rwys 17R, 35L: Standard.

(NARRATIVE ON FOLLOWING PAGE)
 (NOTES CONTINUED ON FOLLOWING PAGE)

NOTE: Chart not to scale.

SC-5, 12 OCT 2017 to 09 NOV 2017

SC-5, 12 OCT 2017 to 09 NOV 2017