

EL DORADO NINE DEPARTURE

ATIS
 128.375
 CLNC DEL
 119.45
 GND CON
 121.8 239.0
 HOOKS TOWER★
 127.4 354.1 (EAST)
 118.4 (CTAF) 354.1 (WEST)
 HOUSTON DEP CON
 119.7 281.4

**TOP ALTITUDE:
 ASSIGNED BY ATC**

EL DORADO
 115.5 ELD
 Chan 102
 N33°15.37'-W92°44.64'
 L-17, H-6

NOTE: RADAR required.
 NOTE: For aircraft destined MEM
 or filed via Q32 or J42.

LUFKIN
 112.1 LFK
 Chan 58

ENJOY
 N31°16.73'
 W94°19.82'

MUSIQ
 N30°33.17'
 W94°53.53'

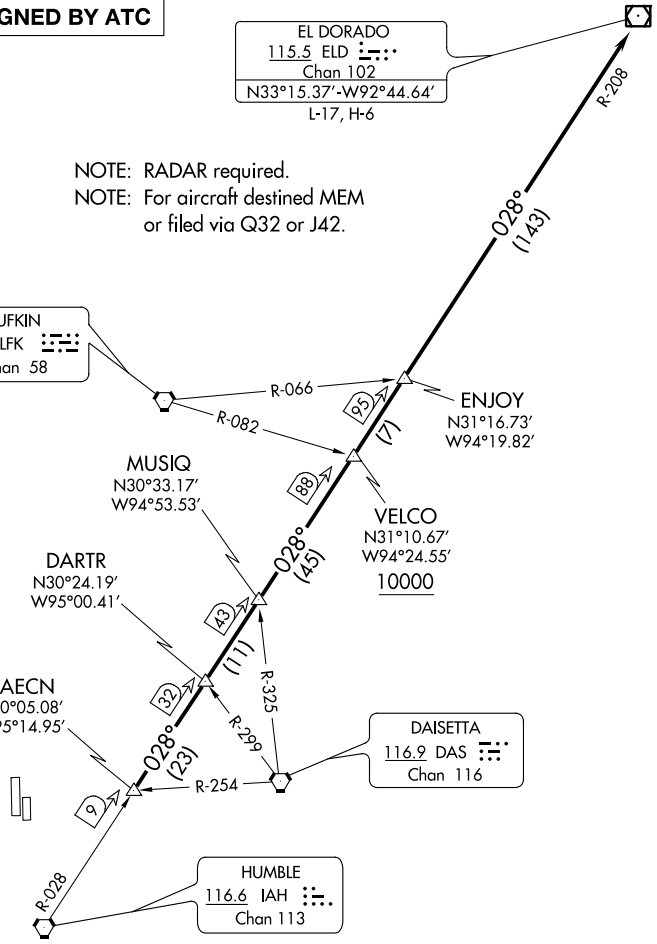
VELCO
 N31°10.67'
 W94°24.55'
 10000

DARTR
 N30°24.19'
 W95°00.41'

RAECN
 N30°05.08'
 W95°14.95'

DAISETTA
 116.9 DAS
 Chan 116

HUMBLE
 116.6 IAH
 Chan 113



TAKEOFF MINIMUMS:
 Rwy 17R, 35L: Standard.
 Rwy 17L, 35R NA - environmental.
 Waterway 17, 35 NA - air traffic.

(NOTES CONTINUED ON FOLLOWING PAGE)
 (NARRATIVE ON FOLLOWING PAGE)

NOTE: Chart not to scale.

SC-5, 12 OCT 2017 to 09 NOV 2017

SC-5, 12 OCT 2017 to 09 NOV 2017