

(OOM4.OOM) 17117

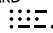
# HOOSIER FOUR DEPARTURE


AL-5438 (FAA)

INDIANAPOLIS EXECUTIVE (TYQ)  
INDIANAPOLIS, INDIANA

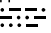
AWOS-3PT  
120.725  
INDIANAPOLIS DEP CON  
124.65 127.15 317.8  
CTAF  
123.05

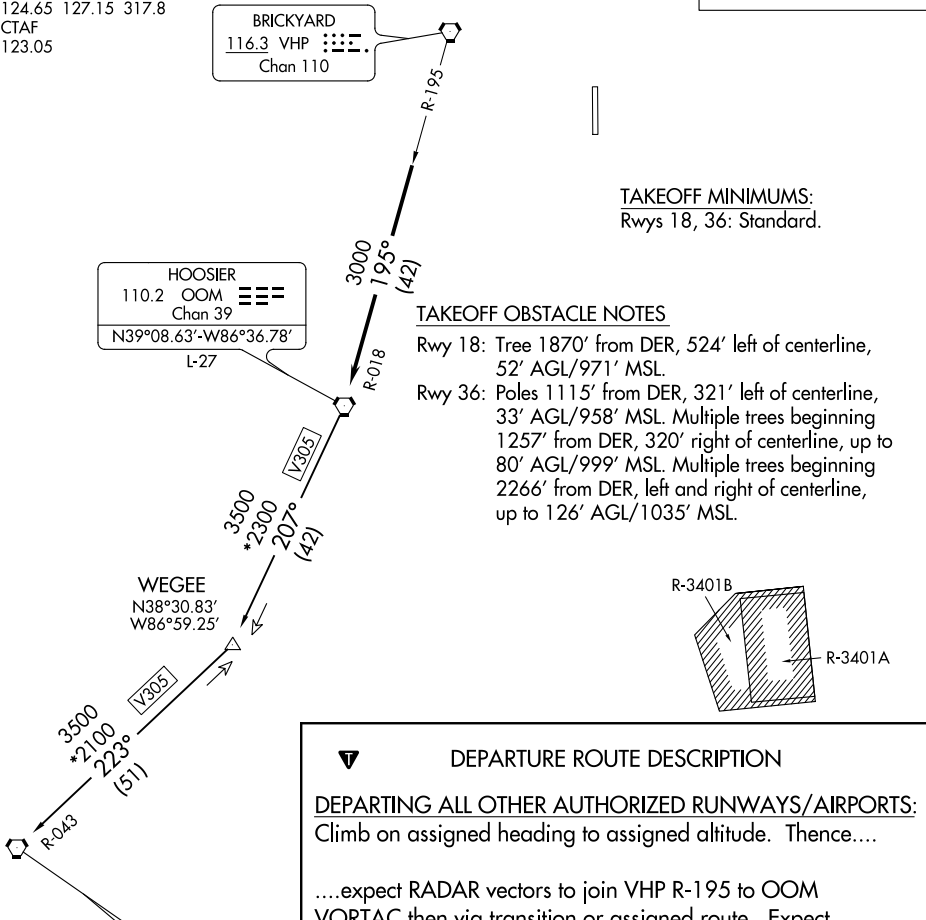
**TOP ALTITUDE:  
ASSIGNED BY ATC**

BRICKYARD  
116.3 VHP   
Chan 110

HOOSIER  
110.2 OOM   
Chan 39  
N39°08.63'-W86°36.78'  
L-27

WEGEE  
N38°30.83'  
W86°59.25'

POCKET CITY  
113.3 PXV   
Chan 80  
N37°55.70'-W87°45.74'  
L-16, H-5



TAKEOFF MINIMUMS:  
Rwys 18, 36: Standard.

**TAKEOFF OBSTACLE NOTES**  
Rwy 18: Tree 1870' from DER, 524' left of centerline, 52' AGL/971' MSL.  
Rwy 36: Poles 1115' from DER, 321' left of centerline, 33' AGL/958' MSL. Multiple trees beginning 1257' from DER, 320' right of centerline, up to 80' AGL/999' MSL. Multiple trees beginning 2266' from DER, left and right of centerline, up to 126' AGL/1035' MSL.

**DEPARTURE ROUTE DESCRIPTION**  
DEPARTING ALL OTHER AUTHORIZED RUNWAYS/AIRPORTS:  
Climb on assigned heading to assigned altitude. Thence....  
....expect RADAR vectors to join VHP R-195 to OOM VORTAC then via transition or assigned route. Expect clearance to requested altitude ten minutes after departure.  
**POCKET CITY TRANSITION (OOM4.PXV):** From over OOM VORTAC via OOM R-207 to WEGEE, then via PXV R-043 to PXV VORTAC.

- NOTE: RADAR required.
- NOTE: Select appropriate localizer/DME frequency/channel prior to departure.
- NOTE: Turbojets accelerate to 250K until reaching 10000, if unable advise ATC.
- NOTE: Assigned to aircraft with a requested altitude of 11000 or above.

NOTE: Chart not to scale.

EC-2, 12 OCT 2017 to 09 NOV 2017

EC-2, 12 OCT 2017 to 09 NOV 2017

**HOOSIER FOUR DEPARTURE**  
(OOM4.OOM) 31MAR16

INDIANAPOLIS, INDIANA  
INDIANAPOLIS EXECUTIVE (TYQ)