

| | | |
|--|------------------------|--|
| WAAS CH 97621 W07A | APP CRS 069° | Rwy Idg TDZE Apt Elev 6000 1061 1062 |
|--|------------------------|--|

RNAV (GPS) RWY 7

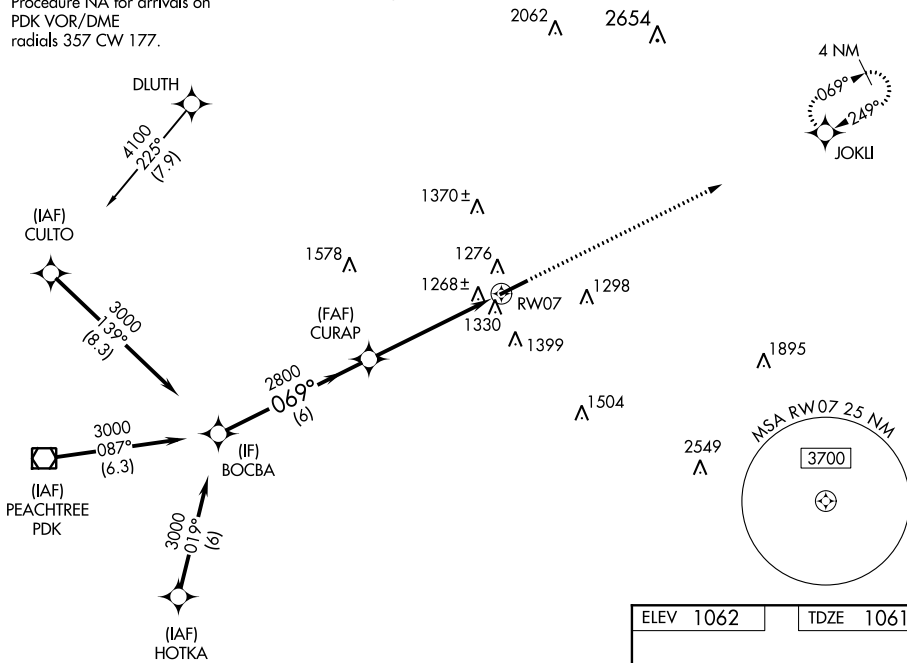
GWINNETT COUNTY-BRISCOE FIELD (LZU)

⚠ DME/DME RNP-0.3 NA. When local altimeter setting not received, use Winder altimeter setting and increase all MDA 60 feet and LNAV and Circling Cats C/D visibility ¼ mile.
⚠ Rwy 7 helicopter visibility reduction below ¾ SM NA.

MISSED APPROACH:
Climb to 3000 direct JOKLI and hold.

| | | | | | | |
|------------------------|---|---|-------------------------|--------------------------|---|-------------------------|
| ATIS 132.275 | ATLANTA APP CON 126.975 239.275 | GWINNETT TOWER ★ 124.1 (CTAF) 0 | GND CON 121.8 | CLNC DEL 121.8 | ATLANTA CLNC DEL 134.0 (When tower closed) | UNICOM 123.05 |
|------------------------|---|---|-------------------------|--------------------------|---|-------------------------|

Procedure NA for arrivals on PDK VOR/DME radials 357 CW 177.

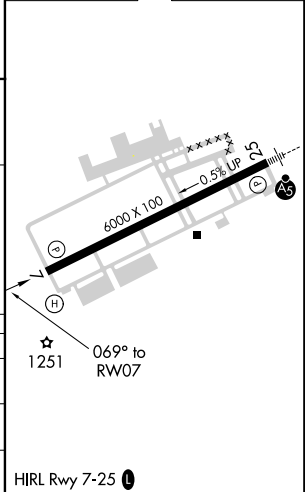
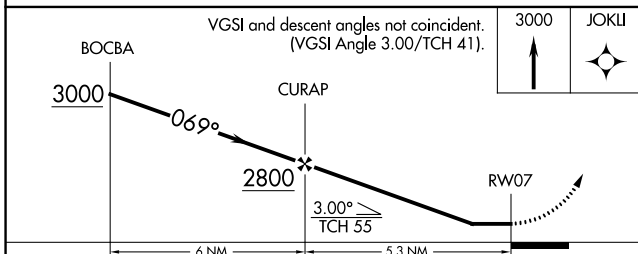


SE-4, 12 OCT 2017 to 09 NOV 2017

SE-4, 12 OCT 2017 to 09 NOV 2017

RADAR required for arrivals at HOTKA.

| | |
|-----------|-----------|
| ELEV 1062 | TDZE 1061 |
|-----------|-----------|



| CATEGORY | A | B | C | D |
|----------|--------|-------------|-------------------------------|-----------------------|
| LP MDA | 1520-1 | 459 (500-1) | 1520-1 3/8 | 459 (500-1 3/8) |
| LNAV MDA | 1580-1 | 519 (600-1) | 1580-1 3/8 | 519 (600-1 3/8) |
| CIRCLING | 1640-1 | 578 (600-1) | 1640-1 1/2 578 (600-1 1/2) | 1700-2 638 (700-2) |