

(PADRZ1.PADRZ) 17061

PADRZ ONE DEPARTURE (RNAV)

SL-5310 (FAA)

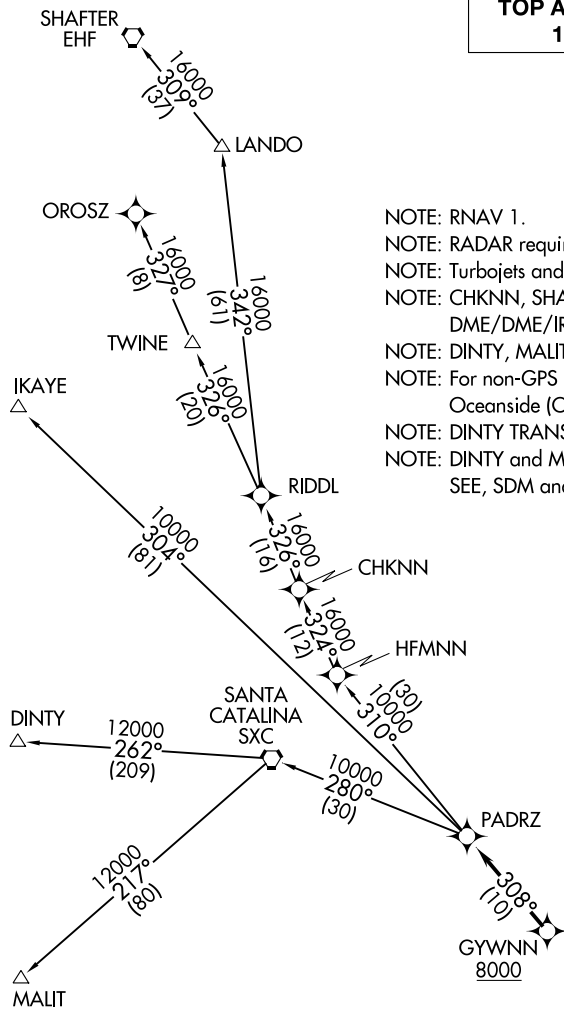
MC CLELLAN-PALOMAR (CRQ)

CARLSBAD, CALIFORNIA

**TOP ALTITUDE:
15000**

ATIS
120.15
PALOMAR TOWER*
118.6 276.4
SOCAL DEP CON
119.6 363.1

- NOTE: RNAV 1.
- NOTE: RADAR required.
- NOTE: Turbojets and Turboprops only.
- NOTE: CHKNN, SHAFTER, IKAYE, OROSZ TRANSITIONS: DME/DME/IRU or GPS Required.
- NOTE: DINTY, MALIT TRANSITIONS: GPS Only.
- NOTE: For non-GPS equipped aircraft, Oceanside (OCN) must be operational.
- NOTE: DINTY TRANSITION: ATC assigned only.
- NOTE: DINTY and MALIT TRANSITIONS NA from SEE, SDM and RNM Airports.



SW-3, 12 OCT 2017 to 09 NOV 2017

SW-3, 12 OCT 2017 to 09 NOV 2017

TAKEOFF MINIMUMS

- Rwy 6: Standard with minimum climb of 255' per NM to 1700.
- Rwy 24: Standard.

(NARRATIVE ON FOLLOWING PAGE)
(NOTES CONTINUED ON FOLLOWING PAGE)

NOTE: Chart not to scale.

PADRZ ONE DEPARTURE (RNAV)

(PADRZ1.PADRZ) 02MAR17

CARLSBAD, CALIFORNIA
MC CLELLAN-PALOMAR (CRQ)