

VOR/DME AHN <b>109.6</b> Chan <b>33</b>	APP CRS <b>262°</b>	Rwy Idg <b>6122</b> TDZE <b>813</b> Apt Elev <b>813</b>
---	------------------------	---

# VOR RWY 27

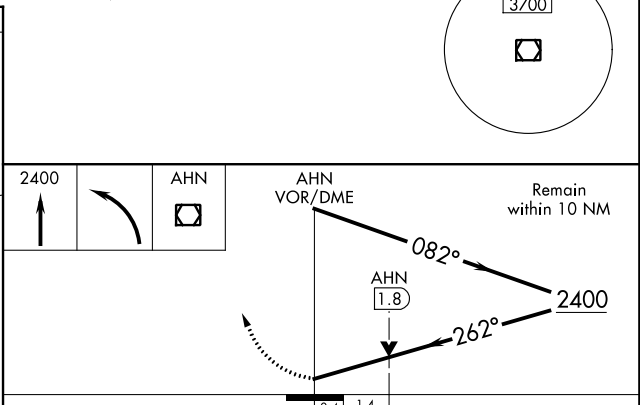
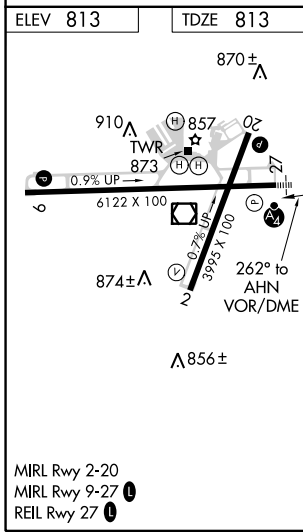
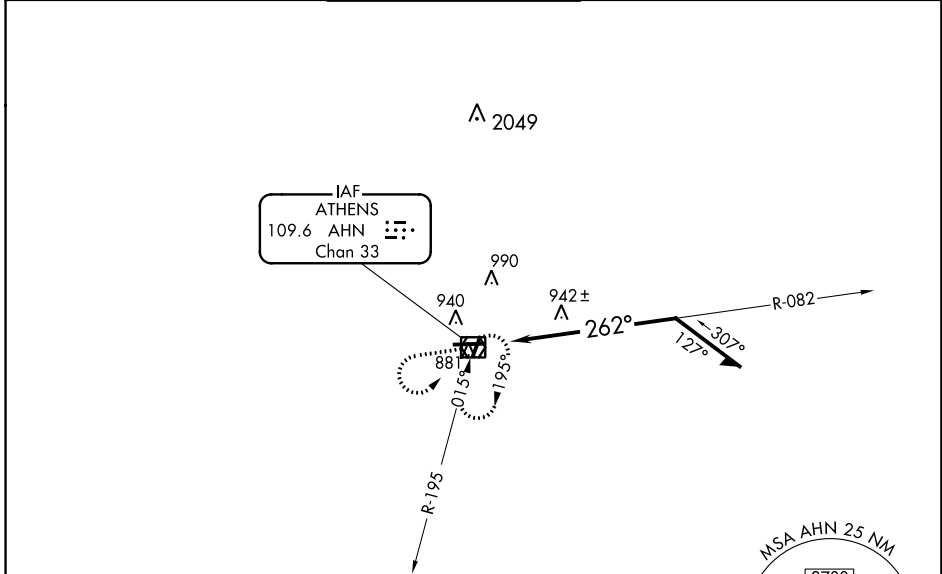
ATHENS/BEN EPPS (AHN)

**⚠** Night landing: Rwy 2, 20 NA. When local altimeter setting not received, use Winder altimeter setting: increase all MDA 60 feet and S-27 Cats C and D visibility to 1 3/8 mile, and Circling Cat C visibility to 1 1/8 mile, and Cat D to 2 1/4 mile. VDP NA when using Winder altimeter setting. For inop MALSF increase S-27 Cats A and B visibility to 1 mile, and Cats C and D to 1 3/8 mile. For inop MALSF when using Winder altimeter setting increase S-27 Cats A and B visibility to 1 mile, and Cats C and D to 1 3/8 mile.



**MISSED APPROACH:**  
Climb to 2400 then left turn direct AHN VOR/DME and hold.

ASOS <b>132.875</b>	ATLANTA APP CON * <b>132.475 291.1</b>	ATHENS TOWER * <b>126.3 (CTAF) 0 338.275</b>	GND CON <b>121.8</b>	CLNC DEL <b>132.475 291.1</b> (when tower closed)	UNICOM <b>122.95</b>
------------------------	---	---	-------------------------	---	-------------------------



CATEGORY	A	B	C	D
S-27	1300-3/4	487 (500-3/4)	1300-1 1/8	487 (500-1 1/8)
<b>C</b> CIRCLING	1300-1	487 (500-1)	1320-1 1/2 507 (600-1 1/2)	1460-2 647 (700-2)