

|   |                        |   |
|---|------------------------|---|
| VOR/DME AHN<br><b>109.6</b><br>Chan <b>33</b> | APP CRS<br><b>014°</b> | Rwy Idg <b>3995</b><br>TDZE <b>805</b><br>Apt Elev <b>808</b> |
|---|------------------------|---|

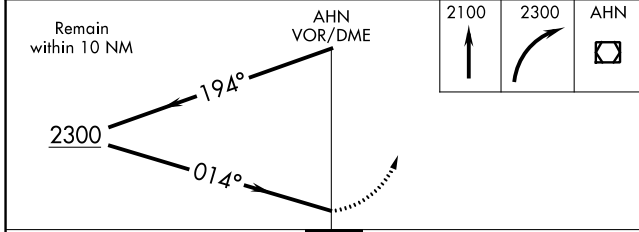
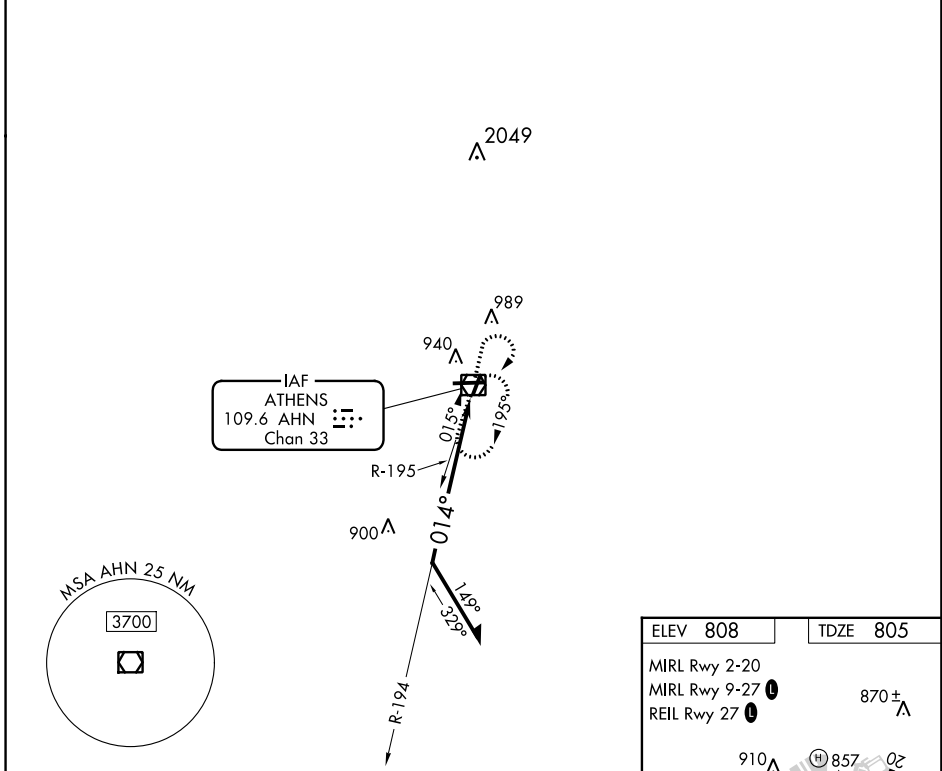
# VOR RWY 2

ATHENS/BEN EPPS (AHN)

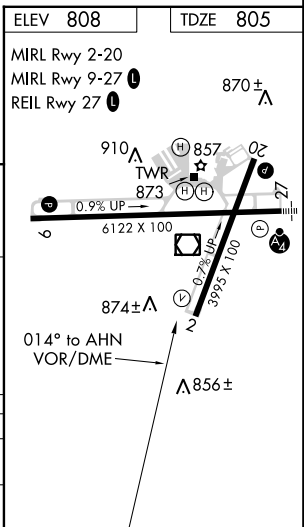
**⚠** When VGSI inop, Circling Rwy 20 NA at night. When VGSI inop, Straight-in/Circling Rwy 2 procedure NA at night. Visibility reduction by helicopters NA. When local altimeter setting not received, use Winder altimeter setting and increase all MDA 60 feet, and S-2 Cat D visibility ¼ mile.

**MISSED APPROACH:** Climb to 2100 then climbing right turn to 2300 direct AHN VOR/DME and hold.

|                        |   |   |                         |   |                         |
|------------------------|---|---|-------------------------|---|-------------------------|
| ASOS<br><b>132.875</b> | ATLANTA APP CON *<br><b>132.475 291.1</b> | ATHENS TOWER *<br><b>126.3 (CTAF) 0 338.275</b> | GND CON<br><b>121.8</b> | CINC DEL<br><b>132.475 291.1</b><br>(when tower closed) | UNICOM<br><b>122.95</b> |
|------------------------|---|---|-------------------------|---|-------------------------|



| CATEGORY | A      | B           | C       | D                                  |
|----------|--------|-------------|---------|------------------------------------|
| S-2      | 1220-1 | 415 (500-1) | 1220-1¼ | 415 (500-1¼)                       |
| CIRCLING | 1260-1 | 452 (500-1) | 1260-1½ | 1360-2<br>452 (500-1½) 552 (600-2) |



SE-4, 12 OCT 2017 to 09 NOV 2017

SE-4, 12 OCT 2017 to 09 NOV 2017