

# RNAV (GPS) RWY 9

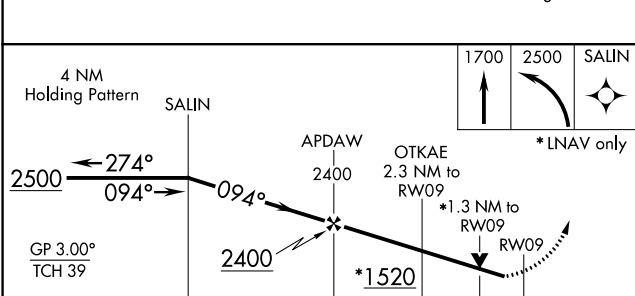
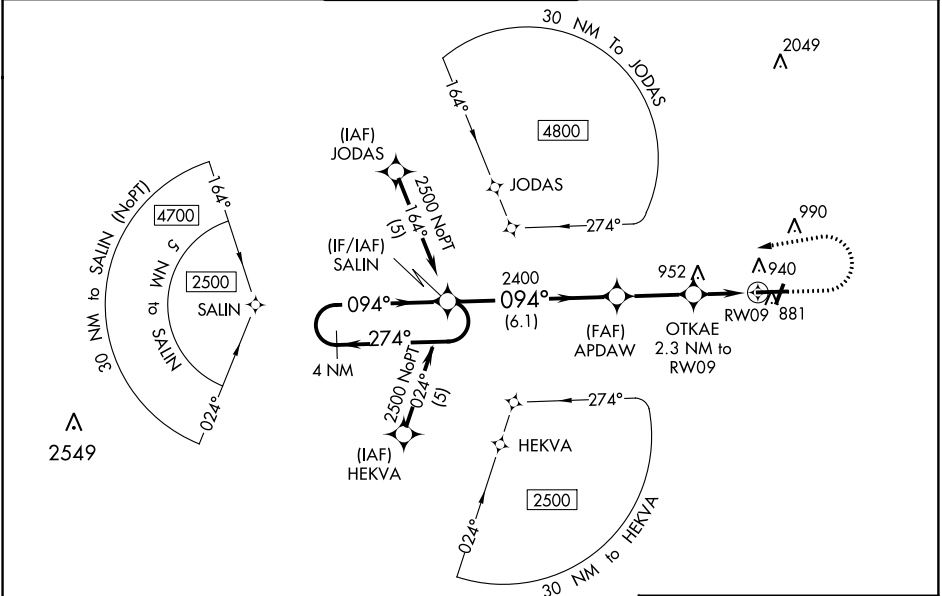
ATHENS/BEN EPPS (AHN)

WAAS CH <b>93937</b> <b>W09A</b>	APP CRS <b>094°</b>	Rwy Idg <b>6122</b> TDZE <b>778</b> Apt Elev <b>813</b>
----------------------------------------	------------------------	---------------------------------------------------------------

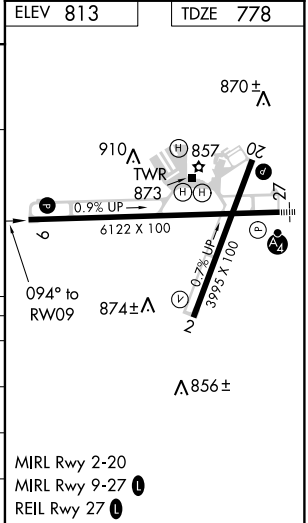
**▽** DME/DME RNP-0.3 NA. Night landing: Rwy 2, 20 NA. Baro-VNAV and VDP NA using Winder altimeter setting. When local altimeter setting not received, use Winder altimeter setting; increase LPV DA to 1086 feet and all visibilities  $\frac{1}{4}$  mile; increase LNAV/VNAV DA to 1173 and all visibilities  $\frac{1}{8}$  mile; increase all MDAs 60 feet and Circling Cat D visibility  $\frac{1}{4}$  mile. For uncompensated Baro-VNAV systems, LNAV/VNAV NA below -9°C (16°F) or above 54°C (130°F). Helicopter visibility reduction below  $\frac{3}{4}$  SM NA.

**MISSED APPROACH:** Climb to 1700 then climbing left turn to 2500 direct SALIN and hold.

ASOS <b>132.875</b>	ATLANTA APP CON * <b>132.475 291.1</b>	ATHENS TOWER * <b>126.3 (CTAF) 338.275</b>	GND CON <b>121.8</b>	CLNC DEL <b>132.475 291.1</b> (when tower closed)	UNICOM <b>122.95</b>
------------------------	-------------------------------------------	-----------------------------------------------	-------------------------	---------------------------------------------------------	-------------------------



CATEGORY	A	B	C	D
LPV DA		1028- $\frac{7}{8}$	250 (300- $\frac{7}{8}$ )	
LNAV/VNAV DA		1115-1 $\frac{1}{4}$	337 (400-1 $\frac{1}{4}$ )	
LNAV MDA	1220-1	442 (500-1)	1220-1 $\frac{3}{8}$	442 (500-1 $\frac{3}{8}$ )
<b>C</b> CIRCLING	1260-1 447 (500-1)	1280-1 467 (500-1)	1320-1 $\frac{1}{2}$ 507 (600-1 $\frac{1}{2}$ )	1460-2 647 (700-2)



SE-4, 12 OCT 2017 to 09 NOV 2017

SE-4, 12 OCT 2017 to 09 NOV 2017