

VOR/DME PVW <b>112.9</b> Chan <b>76</b>	APP CRS <b>024°</b>	Rwy Idg <b>5997</b> TDZE <b>3374</b> Apt Elev <b>3374</b>
---	------------------------	---

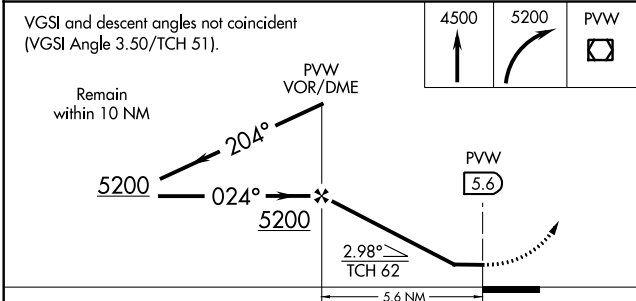
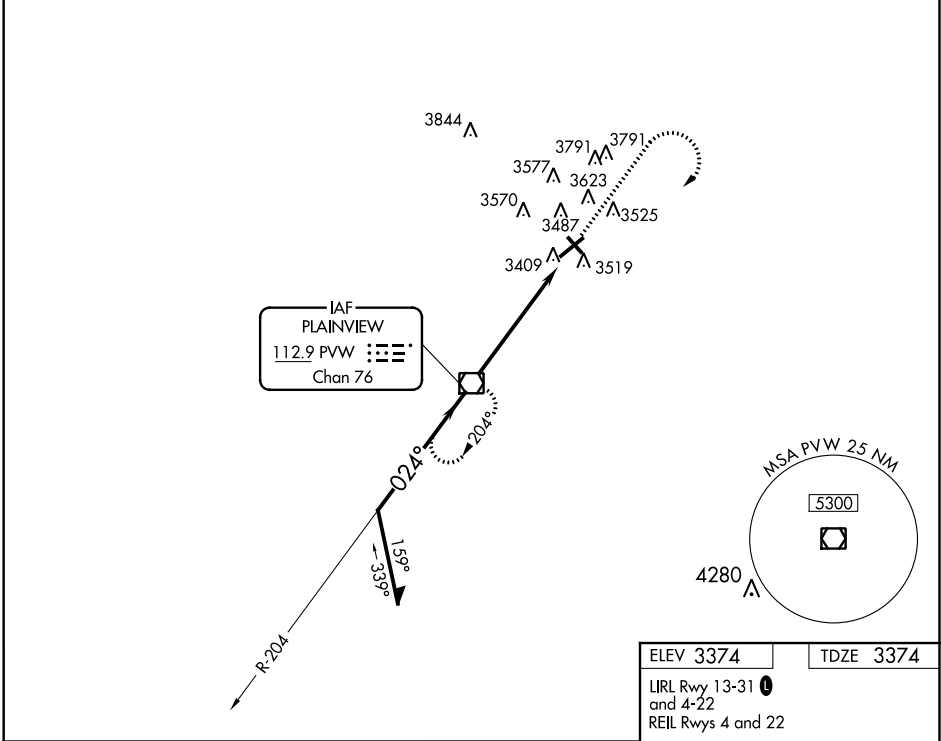
# VOR RWY 4

HALE COUNTY (PVW)

**NA** When local altimeter setting not received, use Lubbock altimeter setting and increase all MDA, 100 feet, increase S-4 visibility Cat C to 1½, Cat D and Circling Cat C to 1¼. Helicopter visibility reduction below ¾ mile NA.

MISSED APPROACH: Climb to 4500, then climbing right turn to 5200 direct PVW VOR/DME and hold.

ASOS <b>119.675</b>	LUBBOCK APP CON <b>119.2 351.8</b>	CLNC DEL <b>121.7</b>	UNICOM <b>123.0 (CTAF)</b>
------------------------	---------------------------------------	--------------------------	-------------------------------



ELEV 3374	TDZE 3374
LIRL Rwy 13-31 and 4-22	
REIL Rwy 4 and 22	

FAF to MAP 5.6 NM					
Knots	60	90	120	150	180
Min:Sec	5:36	3:44	2:48	2:14	1:52

CATEGORY	A	B	C	D
S-4	3840-1	466 (500-1)	3840-1⅓	466 (500-1⅓)
CIRCLING	3920-1 546 (600-1)	3940-1 566 (600-1)	3940-1½ 566 (600-1½)	3940-2 566 (600-2)

SC-2, 12 OCT 2017 to 09 NOV 2017

SC-2, 12 OCT 2017 to 09 NOV 2017