

APP CRS <b>328°</b>	Rwy Idg <b>5256</b> TDZE <b>933</b> Apt Elev <b>942</b>
------------------------	---

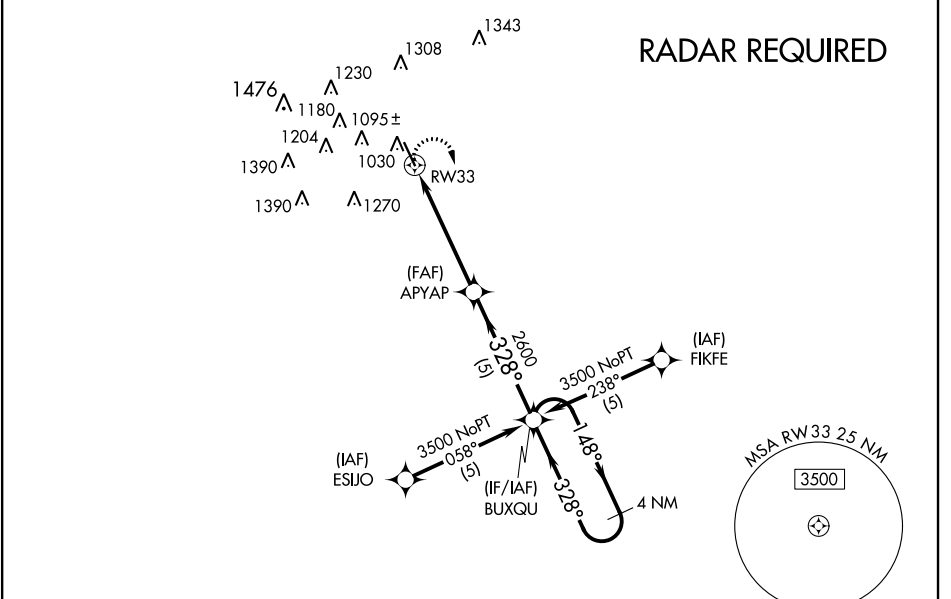
# RNAV (GPS) RWY 33

GARNER FIELD (UVA)

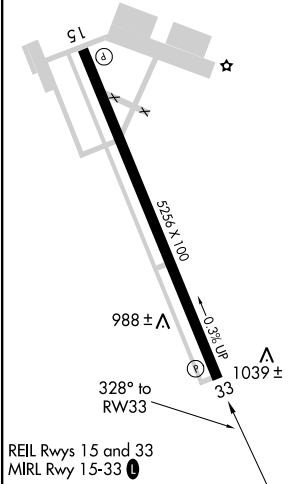
**⚠** When local altimeter setting not received, use South Texas Rgnl at Hondo altimeter setting and increase all MDA 100 feet and increase LNAV Cat C and D and Circling Cat C visibility ¼ mile. DME/DME RNP-0.3 NA.

**MISSED APPROACH:**  
Climbing right turn to 3500 direct BUXQU WP and hold.

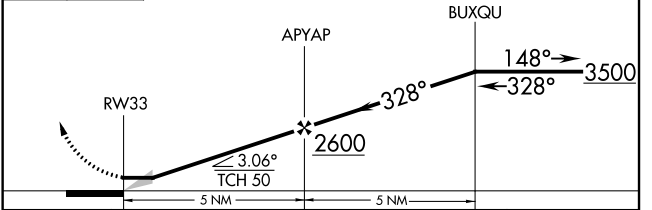
AWOS-3 <b>124.175</b>	HOUSTON CENTER <b>134.95 269.4</b>	UNICOM <b>122.8 (CTAF) 0</b>
--------------------------	---------------------------------------	---------------------------------



ELEV <b>942</b>	TDZE <b>933</b>
-----------------	-----------------



**3500** BUXQU VGSi and descent angle not coincident (VGSi Angle 3.00/TCH 35). **4 NM Holding Pattern**



CATEGORY	A	B	C	D
GLS DA	NA			
LNAV/VNAV DA	NA			
LNAV MDA	1380-1 447 (500-1)	1380-1¼ 447 (500-1¼)	1380-1½ 447 (500-1½)	1380-1½ 447 (500-1½)
CIRCLING	1380-1 438 (500-1)	1460-1 518 (600-1)	1460-1½ 518 (600-1½)	1500-2 558 (600-2)

SC-3, 12 OCT 2017 to 09 NOV 2017

SC-3, 12 OCT 2017 to 09 NOV 2017