

NDB UVA <b>281</b>	APP CRS <b>328°</b>	Rwy Idg TDZE Apt Elev	<b>5256</b> <b>933</b> <b>942</b>
-----------------------	------------------------	-----------------------------	---

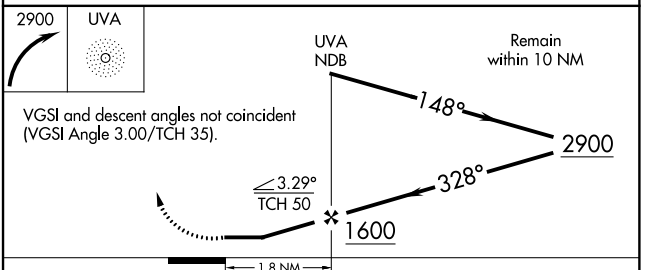
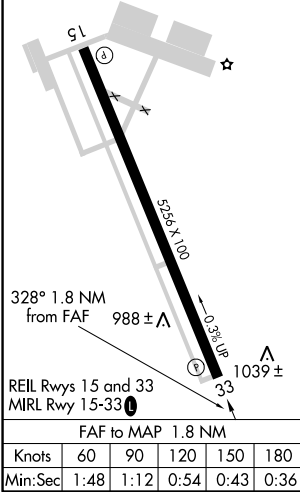
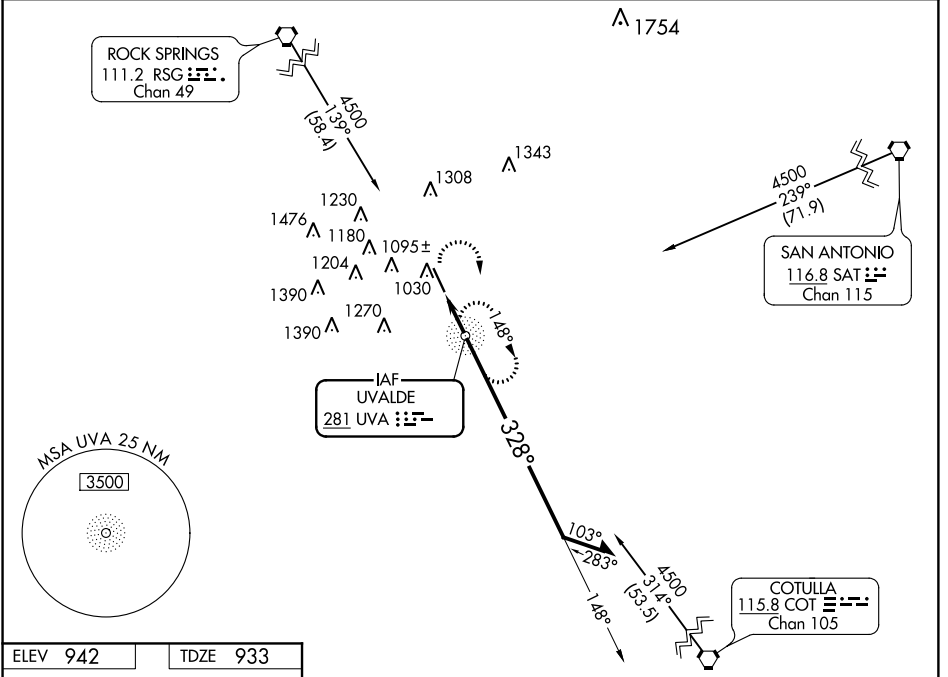
# NDB RWY 33

GARNER FIELD (UVA)

**NA** Obtain local altimeter setting on CTAF; when not received, use South Texas Rgnl at Hondo altimeter setting.

MISSED APPROACH: Climbing right turn to 2900 direct UVA NDB and hold.

AWOS-3 <b>124.175</b>	HOUSTON CENTER <b>134.95 269.4</b>	UNICOM <b>122.8</b> (CTAF) <b>0</b>
--------------------------	---------------------------------------	--



CATEGORY	A	B	C	D
S-33	1340-1	407 (400-1)	1340-1/4	407 (400-1/4)
CIRCLING	1340-1 398 (400-1)	1460-1 518 (600-1)	1460-1 1/2 518 (600-1 1/2)	1500-2 558 (600-2)
SOUTH TEXAS REGIONAL AT HONDO ALTIMETER SETTING MINIMUMS				
S-33	1440-1	507 (500-1)	1440-1 1/2	507 (500-1 1/2)
CIRCLING	1440-1 498 (500-1)	1560-1 618 (700-1)	1560-1 3/4 618 (700-1 3/4)	1600-2 658 (700-2)

SC-3, 12 OCT 2017 to 09 NOV 2017

SC-3, 12 OCT 2017 to 09 NOV 2017