


LOM LC 328	APP CRS 083°	Rwy Idg 5646
		TDZE 545
		Apt Elev 545

NDB RWY 8

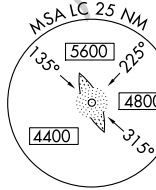
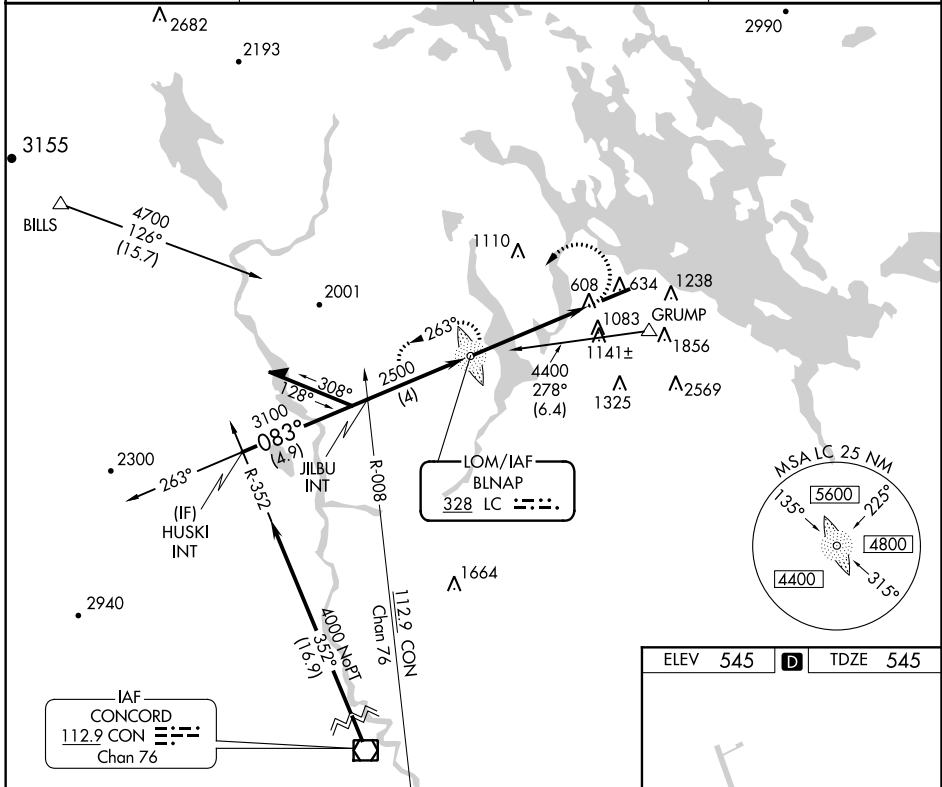
LACONIA MUNI (LCI)

⚠ If local altimeter setting not received, use Concord altimeter setting and increase all MDAs 80 feet. For inoperative MALSR, increase S-8 Cats A/B visibility to 1 1/4. Night **⚡** -25°C/-13°F landing: Rwy 26 NA.

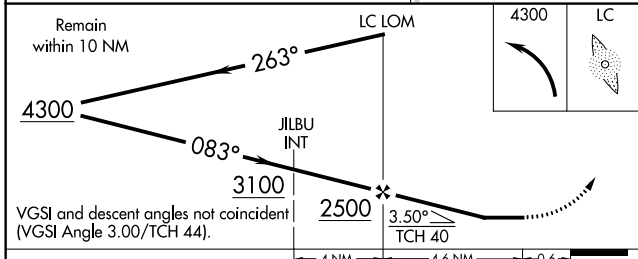
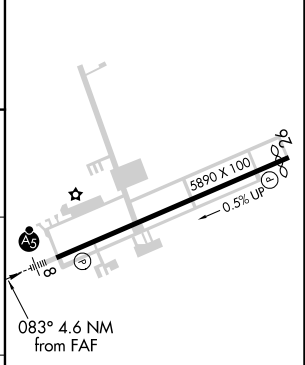
MALSR 

MISSED APPROACH: Climbing left turn to 4300 direct LC LOM and hold, continue climb-in-hold to 4300.

AWOS-3PT 133.525	BOSTON APP CON 134.75 254.25	CLNC DEL 119.85	UNICOM 123.0 (CTAF)
----------------------------	--	---------------------------	-------------------------------



ELEV 545	D	TDZE 545
----------	----------	----------



CATEGORY	A	B	C	D
S-8	1460-3/4 915 (1000-3/4)		1460-2 1/4 915 (1000-2 1/4)	1460-2 3/4 915 (1000-2 3/4)
CIRCLING	1460-1 1/4 915 (1000-1 1/4)	1600-1 1/2 1055 (1100-1 1/2)	1600-3 1055 (1100-3)	2160-3 1615 (1700-3)

FAF to MAP 4.6 NM					
Knots	60	90	120	150	180
Min:Sec	4:34	3:03	2:17	1:50	1:31

NE-1, 12 OCT 2017 to 09 NOV 2017

NE-1, 12 OCT 2017 to 09 NOV 2017