

VORTAC OSH 111.8 Chan 55	APP CRS 265°	Rwy Idg TDZE 786 Apt Elev 808
----------------------------------------------	------------------------	---------------------------------------------------

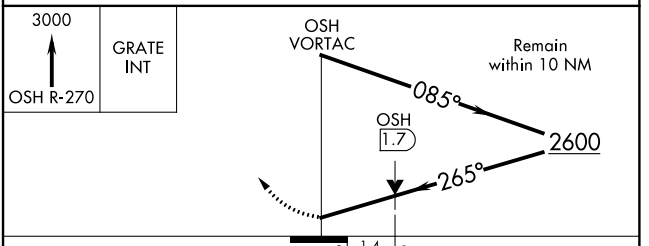
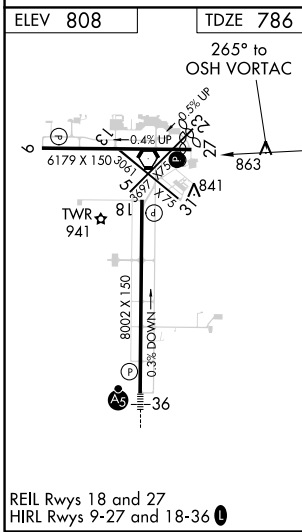
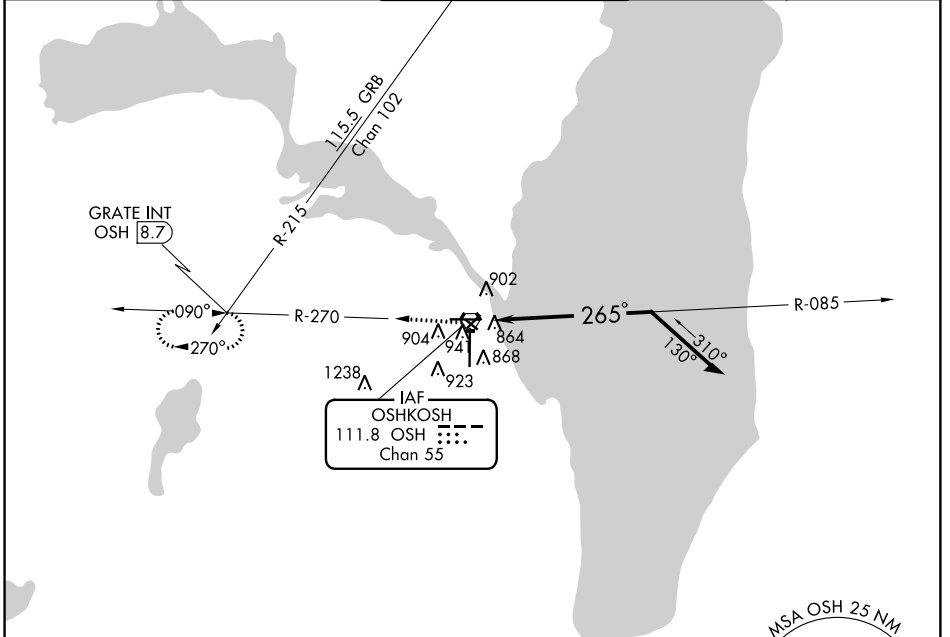
VOR RWY 27

WITTMAN RGNL (OSH)

⚠ Circling to Rwy 5, 23, and 31 NA at night. When local altimeter setting not received, use Fond Du Lac altimeter setting and increase all MDA 40 feet; increase S-27 Cats C and D visibility ¼ mile and Circling Cat C visibility ½ mile, and Cat D ¼ mile. VDP NA with Fond Du Lac altimeter setting. Helicopter visibility reduction below ¾ SM NA.

⚠ MISSED APPROACH: Climb to 3000 on OSH VORTAC R-270 to GRATE INT/OSH 8.7 DME and hold.

ATIS 125.9	MILWAUKEE APP CON 127.0 263.075	OSHKOSH TOWER ★ 118.5 (CTAF) 290.9	GND CON 121.9	UNICOM 122.95
----------------------	-------------------------------------------	----------------------------------------------	-------------------------	-------------------------



CATEGORY	A	B	C	D
S-27	1280-1	494 (500-1)	1280-1⅓ 494 (500-1⅓)	
C CIRCLING	1280-1 472 (500-1)	1300-1 492 (500-1)	1360-1½ 552 (600-1½)	1440-2 632 (700-2)

EC-3, 12 OCT 2017 to 09 NOV 2017

EC-3, 12 OCT 2017 to 09 NOV 2017