


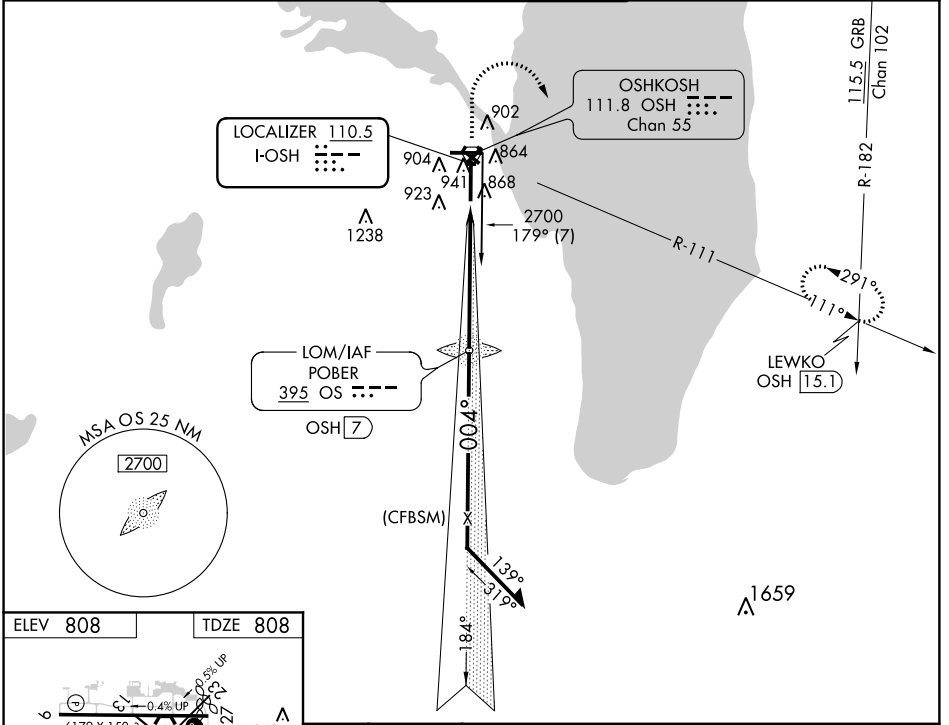
LOC I-OSH 110.5	APP CRS 004°	Rwy Idg 8002
		TDZE 808
		Apt Elev 808

ILS or LOC RWY 36

WITTMAN RGNL (OSH)

<p>⚠ When local altimeter setting not received, use Fond Du Lac altimeter setting and increase DA 31 feet and all MDA 40 feet; increase S-LOC 36 Cat C/D and Circling Cat C/D visibilities 1/4 mile. For inop MALSRS when using Fond Du Lac altimeter setting, increase S-LOC 36 Cat C/D visibility to 1 1/8 mile. Circling to Rwy 5, 23, and 31 NA at night. * RVR 1800 authorized with the use of FD or AP or HUD to DA.</p>	<p>MALSRS</p>  <p>MISSED APPROACH: Climb to 1300 then climbing right turn to 3000 on OSH R-111 to LEWKO INT/OSH 15 DME and hold.</p>
---	---

ATIS 125.9	MILWAUKEE APP CON 127.0 263.075	OSHKOSH TOWER ★ 118.5 (CTAF) 290.9	GND CON 121.9	UNICOM 122.95
----------------------	---	--	-------------------------	-------------------------

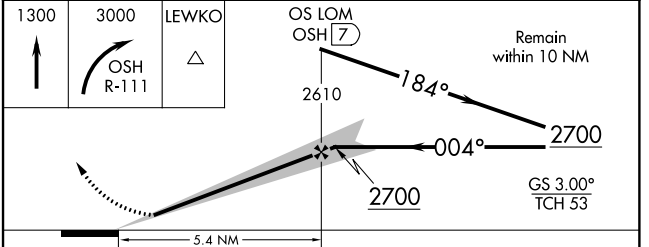


ELEV 808	TDZE 808
----------	----------

REIL Rwys 18 and 27
HIRL Rwys 9-27 and 18-36

FAF to MAP 5.4 NM

Knots	60	90	120	150	180
Min:Sec	5:24	3:36	2:42	2:10	1:48



CATEGORY	A	B	C	D
S-ILS 36 *	1008/24 200 (200-1/2)			
S-LOC 36	1340/24	532 (600-1/2)	1340/55	532 (600-1/4)
C CIRCLING	1340-1	532 (600-1)	1360-1 1/2	1440-2
			552 (600-1/2)	632 (700-2)

EC-3, 12 OCT 2017 to 09 NOV 2017

EC-3, 12 OCT 2017 to 09 NOV 2017