

NDB RWY 1 YELLOWSTONE (WYS)

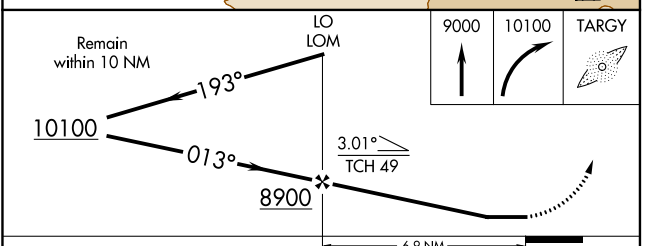
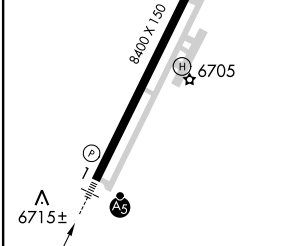
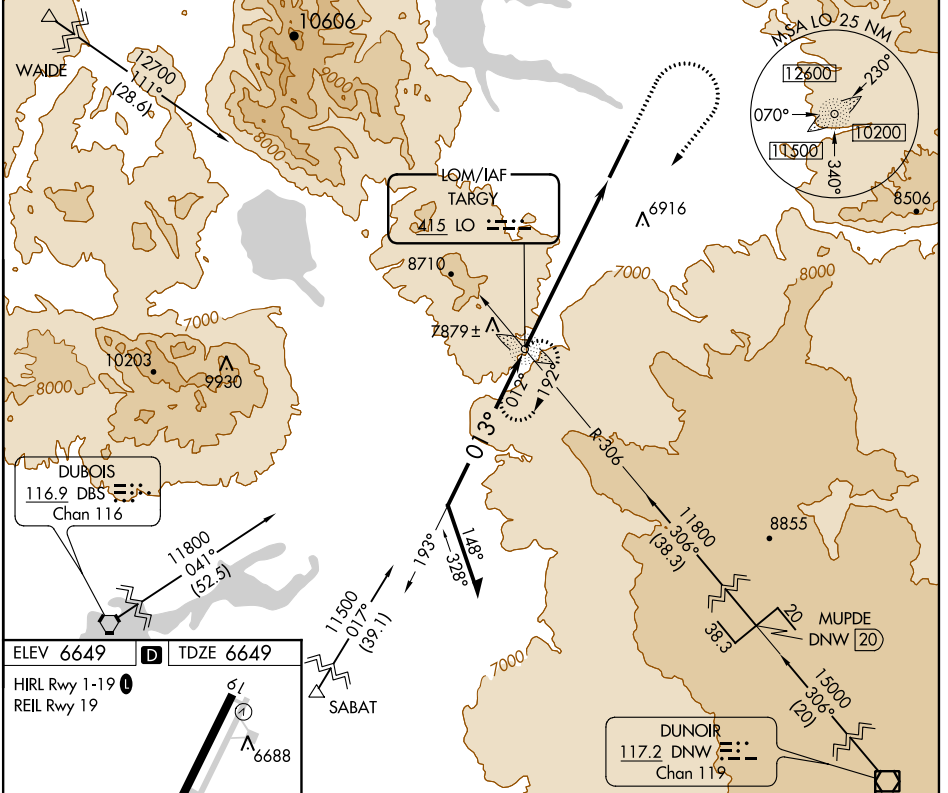
LOM LO 415	APP CRS 013°	Rwy Idg TDZE Apt Elev	8399 6649 6649
----------------------	------------------------	-----------------------------	---

NA Obtain local altimeter setting on CTAF, when not received procedure NA. Inoperative table does not apply to S-1 Cat A and Cat B.

MALSR

MISSED APPROACH: Climb to 9000 then climbing right turn to 10100 direct TARGY LOM and hold.

AWOS-3P 118.1	SALT LAKE CENTER 132.4 338.3	UNICOM 123.0 (CTAF)
-------------------------	--	-------------------------------



FAF to MAP 6.9 NM					
Knots	60	90	120	150	180
Min:Sec	6:54	4:36	3:27	2:46	2:18

CATEGORY	A	B	C	D
S-1	8240-1¼ 1591 (1600-1¼)	8240-1½ 1591 (1600-1½)	8240-2½ 1591 (1600-2½)	8240-2¾ 1591 (1600-2¾)
CIRCLING	8240-1¼ 1591 (1600-1¼)	8240-1½ 1591 (1600-1½)	8240-3	1591 (1600-3)

NW-1, 12 OCT 2017 to 09 NOV 2017

NW-1, 12 OCT 2017 to 09 NOV 2017