

VORTAC TRM 116.2 Chan 109	APP CRS 316°	Rwy Idg TDZE Apt Elev	4995 -121 -114
---	------------------------	-----------------------------	---

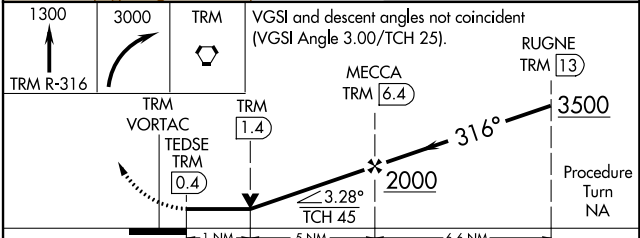
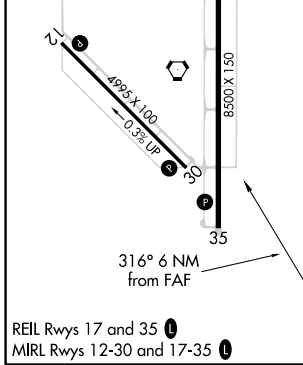
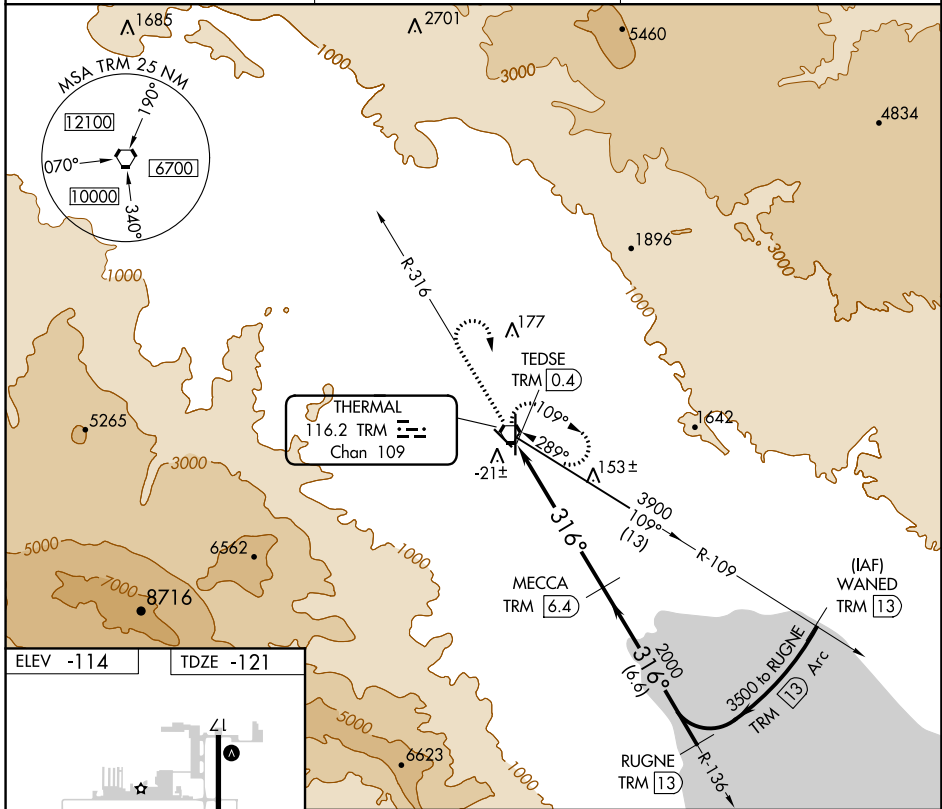
VOR/DME RWY 30

JACQUELINE COCHRAN RGNL (TRM)

NA

MISSED APPROACH: Climb to 1300 via TRM R-316 then climbing right turn to 3000 direct TRM VORTAC and hold.

ASOS 118.325	SOCAL APP CON* 135.275 251.1	UNICOM 123.0 (CTAF) 0
------------------------	--	--



CATEGORY	A	B	C	D
S-30	240-1 361 (400-1)			240-1½ 361 (400-1½)
CIRCLING	340-1	454 (500-1)	340-1½ 454 (500-1½)	500-2 614 (700-2)

SW-3, 12 OCT 2017 to 09 NOV 2017

SW-3, 12 OCT 2017 to 09 NOV 2017