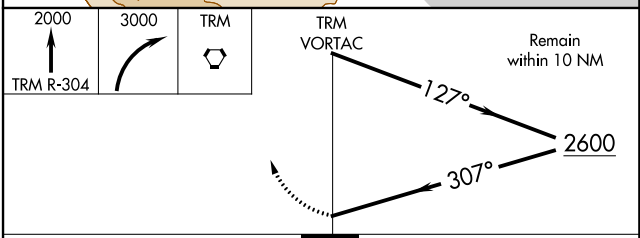
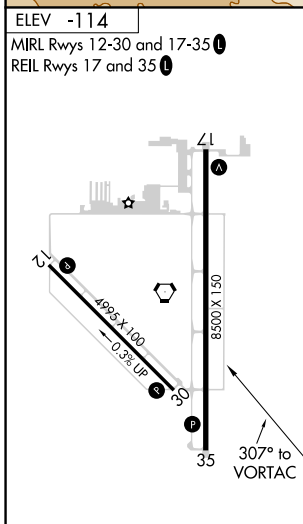
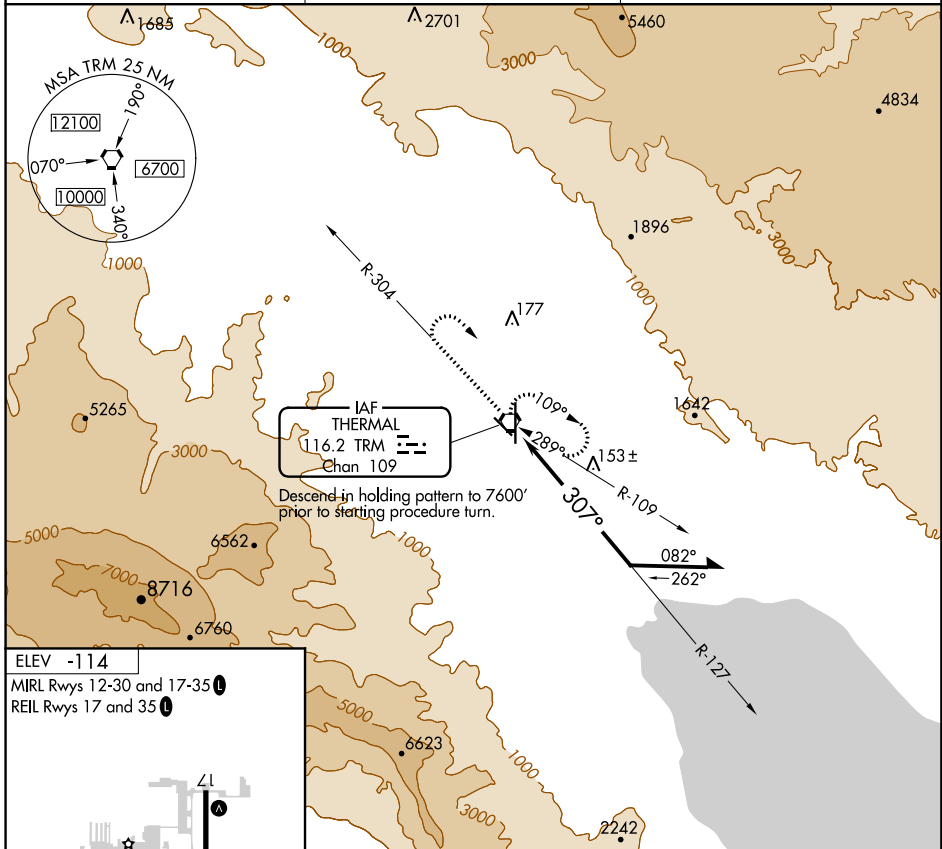


VORTAC TRM <b>116.2</b> Chan <b>109</b>	APP CRS <b>307°</b>	Rwy Idg TDZE Apt Elev	<b>N/A</b> <b>N/A</b> <b>-114</b>
---	------------------------	-----------------------------	---

**VOR-A**  
JACQUELINE COCHRAN RGNL (TRM)

**MISSED APPROACH:** Climb to 2000 via TRM R-304 then climbing right turn to 3000 direct TRM VORTAC and hold.

ASOS <b>118.325</b>	SOCAL APP CON * <b>135.275 251.1</b>	UNICOM <b>123.0</b> (CTAF) <b>0</b>
------------------------	---	--



CATEGORY	A	B	C	D
CIRCLING	1100-1¼ 1214 (1300-1¼)	1100-1½ 1214 (1300-1½)	1100-3	1214 (1300-3)

SW-3, 12 OCT 2017 to 09 NOV 2017

SW-3, 12 OCT 2017 to 09 NOV 2017