

APP CRS	Rwy Idg	N/A
256°	TDZE	N/A
	Apt Elev	1957

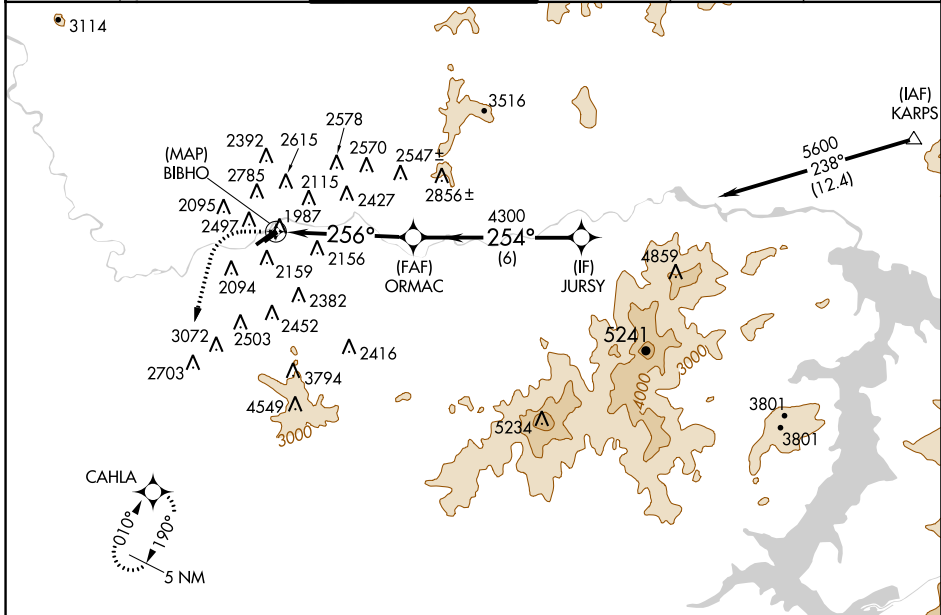
RNAV (GPS)-A

FELTS FIELD (SFF)

⚠ When local altimeter setting not received, use Spokane Intl altimeter setting and increase all MDA 100 feet and increase Cat B/C visibility ¼ mile. Circling NA northwest of Rwy 4L-22R. DME/DME RNP-0.3 NA.

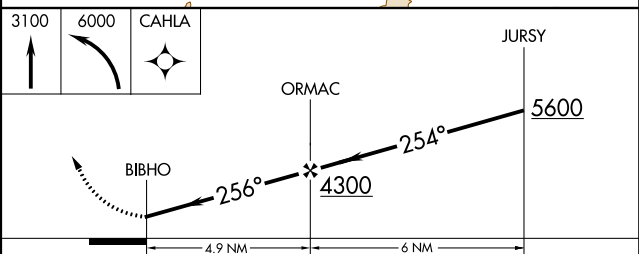
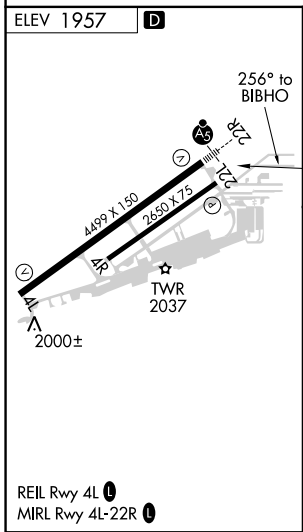
⚠ MISSED APPROACH: Climb to 3100 then climbing left turn to 6000 direct CAHLA and hold, continue climb-in-hold to 6000.

ATIS	SPOKANE APP CON	FELTS TOWER ★	GND CON	CLNC DEL	UNICOM
120.55	133.35 263.0	132.5 (CTAF) 239.025	121.7	121.7	122.95



NW-1, 12 OCT 2017 to 09 NOV 2017

NW-1, 12 OCT 2017 to 09 NOV 2017



CATEGORY	A	B	C	D
CIRCLING	2880-1¼	923 (1000-1¼)	3020-3 1063 (1100-3)	3360-3 1403 (1500-3)