

FELTS FOUR DEPARTURE

NW-1, 12 OCT 2017 to 09 NOV 2017

**TOP ALTITUDE:
12000**

TAKEOFF MINIMUMS

Rwy 4L/R: Standard with minimum climb of 400' per NM to 5000.
Rwy 22L/R: Standard with minimum climb of 370' per NM to 5500.

ATIS
120.55
GND CON
121.7
FELTS TOWER*
132.5 239.025
SPOKANE DEP CON
133.35 263.0

WHATCOM
113.0 HUH
Chan 77
N48°56.72'-W122°34.76'
L-1, H-1

EPHRATA
112.6 EPH
Chan 73
N47°22.68'-W119°25.44'
L-13, H-1

MOSES LAKE
115.0 MWH
Chan 97
N47°12.65'-W119°19.01'
L-13, H-1

SPOKANE
115.5 GEG
Chan 102
N47°33.90'-W117°37.61'
L-13, H-1

PULLMAN
109.0 PUW
Chan 27
N46°40.45'
W117°13.41'
L-13

PASCO
109.8 PSC
Chan 35
N46°16.22'
W119°07.04'
L-13

YAKIMA
116.0 YKM
Chan 107
N46°34.21'-W120°26.68'
L-13, H-1

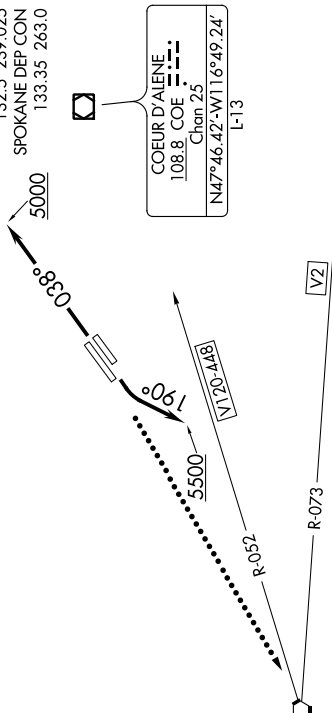
PENDLETON
114.7 PDT
Chan 94
N45°41.91'-W118°56.32'
L-13, H-1

WALLA WALLA
116.4 ALW
Chan 111
N46°05.22'-W118°17.55'
L-13

NEZ PERCE
108.2 MGG
Chan 19
N46°22.89'-W116°52.17'
L-13

MULLAN PASS
117.8 MIP
Chan 125
N47°27.41'-W115°38.76'
L-13, H-1

COEUR D'ALENE
108.8 COE
Chan 25
N47°46.42'-W116°49.24'
L-13



(NARRATIVE ON FOLLOWING PAGE)
(NOTES CONTINUED ON FOLLOWING PAGE)

NOTE: RADAR required.
NOTE: Chart not to scale.

FELTS FOUR DEPARTURE

NW-1, 12 OCT 2017 to 09 NOV 2017