

# BLYTHE FIVE ARRIVAL

AL-322 (FAA)

PHOENIX, ARIZONA

SW-4, 12 OCT 2017 to 09 NOV 2017

## ARRIVAL ROUTE DESCRIPTION

**BLYTHE TRANSITION (BLH.BLH5):** From over BLH VORTAC on BLH R-082 to SALOM, then on GBN R-285 and IWA R-256 to ARLIN. Thence . . . .

**PHOENIX SKY HARBOR INTL:** Rwy 7L/R or 8: From over ARLIN, expect vectors to final approach course; Rwy 25L/R or 26: From over ARLIN, on IWA R-256 to TUKEE. Expect vectors to final approach course prior to TUKEE.  
**SATELLITE AIRPORTS:** Expect vectors after passing SALOM.

**LOST COMMUNICATIONS:** After ARLIN, on IWA R-256 and PXR R-143 to PXR VORTAC.

**BLYTHE**  
 117.4 BLH  
 Chan 121  
 N33°35.76' W114°45.68'  
 L-4-5, H-4

**SALOM**  
 N33°30.97'-W113°53.33  
**VERTICAL NAVIGATION**  
**PLANNING INFORMATION**  
 Turboprop expect 17000  
 Turboprop landing KPHX expect vectors after SALOM.

**BUCKEYE**  
 110.6 BKK  
 Chan 43

**PHOENIX**  
 115.6 PXR  
 Chan 103  
 N33°25.98' W111°58.21'

**PHOENIX-SKY HARBOR INTL**

**FALCON FIELD**

**SADIL**  
 N33°16.01'  
 W113°20.71

**HYDRR**  
 N33°16.46'  
 W113°04.18'

**ARLIN**  
 N33°17.02'  
 W112°41.11'

**AMBR**  
 N33°17.46'  
 W112°20.83'

**TUKEE**  
 N33°17.96'  
 W111°53.85'

**PHOENIX-MESA GATEWAY**

**BARD**  
 116.8 BZA  
 Chan 115

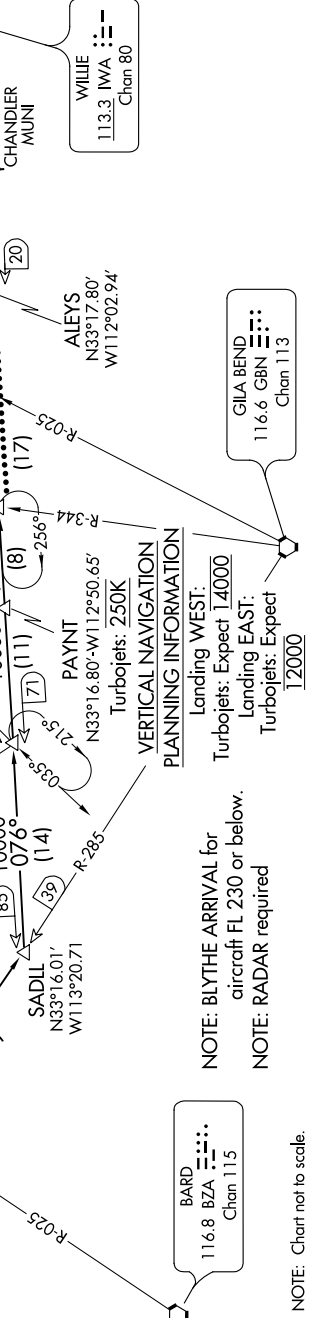
**PAYNT**  
 N33°16.80'-W112°50.65'  
 Turbojets: 250K

**ALEYS**  
 N33°17.80'  
 W112°02.94'

**WILLIE**  
 113.3 IWA  
 Chan 80

**GILA BEND**  
 116.6 GBN  
 Chan 113

**CHANDLER MUNI**



# BLYTHE FIVE ARRIVAL

PHOENIX, ARIZONA

SW-4, 12 OCT 2017 to 09 NOV 2017