

WAAS CH <b>86239</b> <b>W08A</b>	APP CRS <b>079°</b>	Rwy Idg TDZE <b>6204</b> Apt Elev <b>6204</b>	<b>7702</b>
--	------------------------	---	-------------

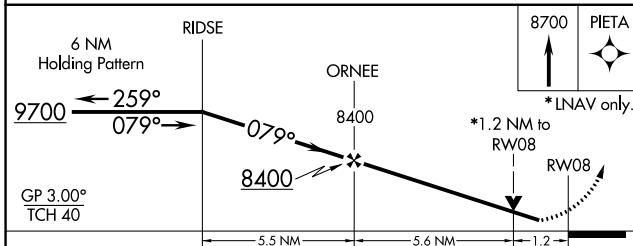
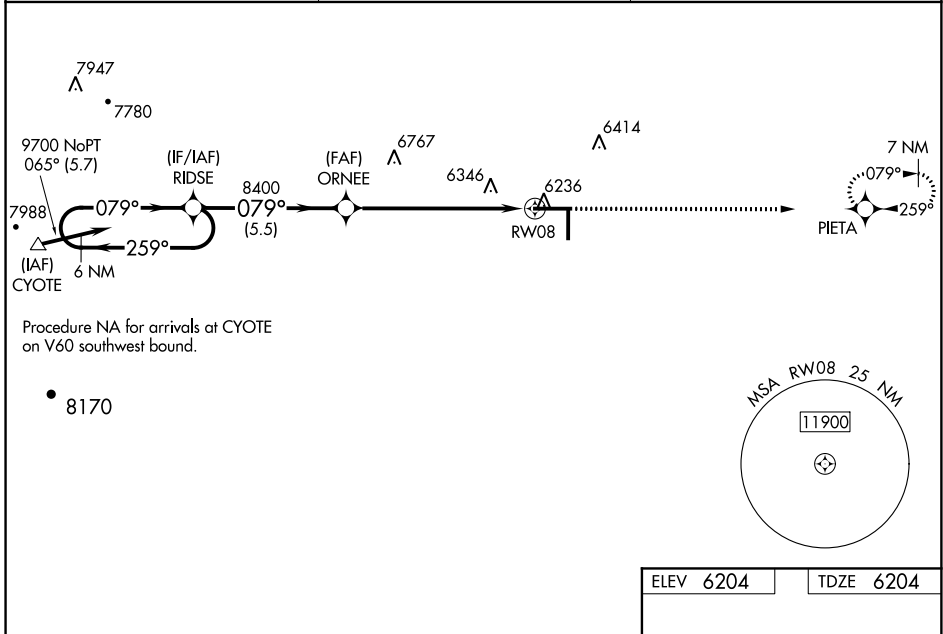
# RNAV (GPS) RWY 8

MORIARTY (ØEØ)

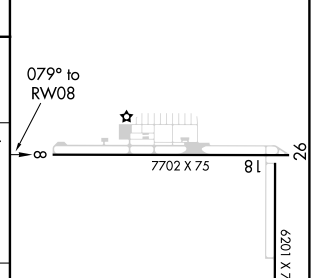
**⚠** DME/DME RNP-0.3 NA. VDP and Baro-VNAV NA with Albuquerque altimeter setting. For uncompensated Baro-VNAV systems, LNAV/VNAV NA below -27°C (-16°F) or above 54°C (130°F). When local altimeter setting not received, use Albuquerque altimeter setting and increase all DA to 7153 feet, increase all MDA to 7340; increase LPV and LNAV/VNAV visibility all Cats 3 1/8 mile, increase LNAV and Circling visibility Cat A 1/4 mile, Cat B 1/2 mile, and LNAV Cat C 1 1/8 miles and Circling Cat C 1 1/2 mile. Night Landing: Rwy 18/36 NA. Helicopter visibility reduction below 3/4 SM NA.

MISSED APPROACH: Climb to 8700 direct PIETA and hold.

AWOS-3PT <b>118.05</b>	ALBUQUERQUE CENTER <b>133.65 284.6</b>	CTAF <b>122.9</b>
---------------------------	---	----------------------



ELEV 6204	TDZE 6204
-----------	-----------



CATEGORY	A	B	C	D
LPV DA	6454-7/8 250 (300-7/8)			NA
LNAV/VNAV DA	6454-7/8 250 (300-7/8)			NA
LNAV MDA	6640-1	436 (500-1)	6640-1 1/4 436 (500-1 1/4)	NA
CIRCLING	6660-1 456 (500-1)	6680-1 476 (500-1)	6760-1 1/2 556 (600-1 1/2)	NA

MIRL Rwy 8-26

SW-1, 12 OCT 2017 to 09 NOV 2017

SW-1, 12 OCT 2017 to 09 NOV 2017