

WAAS CH 40039 W26A	APP CRS 259°	Rwy Idg TDZE Apt Elev	7702 6193 6204
--	------------------------	-----------------------------	---

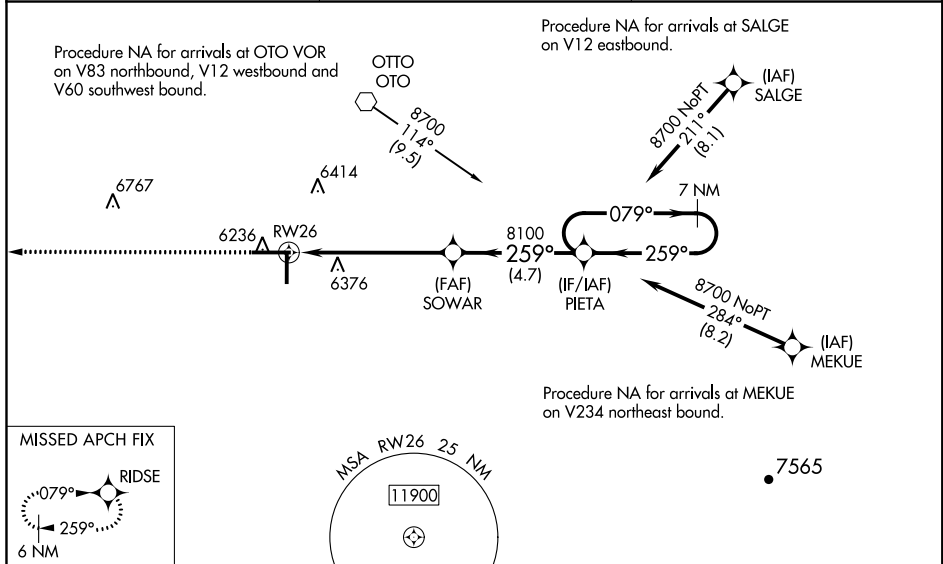
RNAV (GPS) RWY 26

MORIARTY (ØEØ)

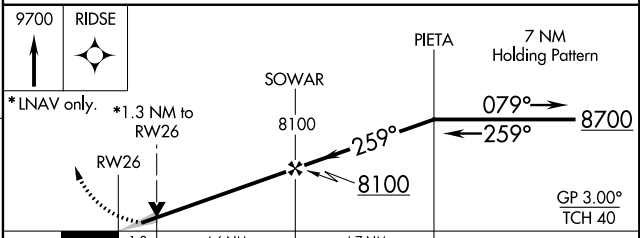
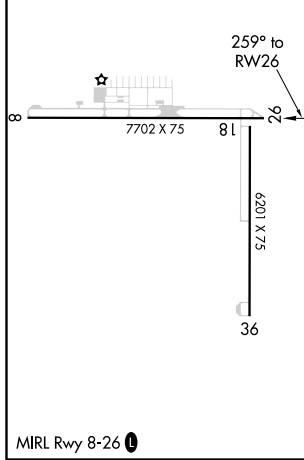
⚠ DME/DME RNP-0.3 NA. VDP and Baro-VNAV NA with Albuquerque altimeter setting. For uncompensated Baro-VNAV systems, LNAV/VNAV NA below -27°C (-16°F) or above 54°C (130°F). When local altimeter setting not received, use Albuquerque altimeter setting and increase DA to 7142 and increase MDA to 7339; increase LPV and LNAV/VNAV visibility all Cats 3/8 mile, increase LNAV and Circling visibility Cat A 1/4 mile, Cat B 1/2 mile and LNAV Cat C 1 1/2 mile and Circling Cat C 1 1/2 mile. Night Landing: Rwy 18/36 NA.

MISSED APPROACH: Climb to 9700 direct RIDSE and hold, continue climb-in-hold to 9700.

AWOS-3PT 118.05	ALBUQUERQUE CENTER 133.65 284.6	CTAF 122.9 0
---------------------------	---	------------------------



ELEV 6204	TDZE 6193
------------------	------------------



CATEGORY	A	B	C	D
LPV DA	6443-7/8	250 (300-7/8)		NA
LNAV/VNAV DA	6443-7/8	250 (300-7/8)		NA
LNAV MDA	6640-1	447 (500-1)	6640-1 3/8 447 (500-1 3/8)	NA
C CIRCLING	6660-1 456 (500-1)	6680-1 476 (500-1)	6740-1 1/2 536 (600-1 1/2)	NA

SW-1, 12 OCT 2017 to 09 NOV 2017

SW-1, 12 OCT 2017 to 09 NOV 2017