

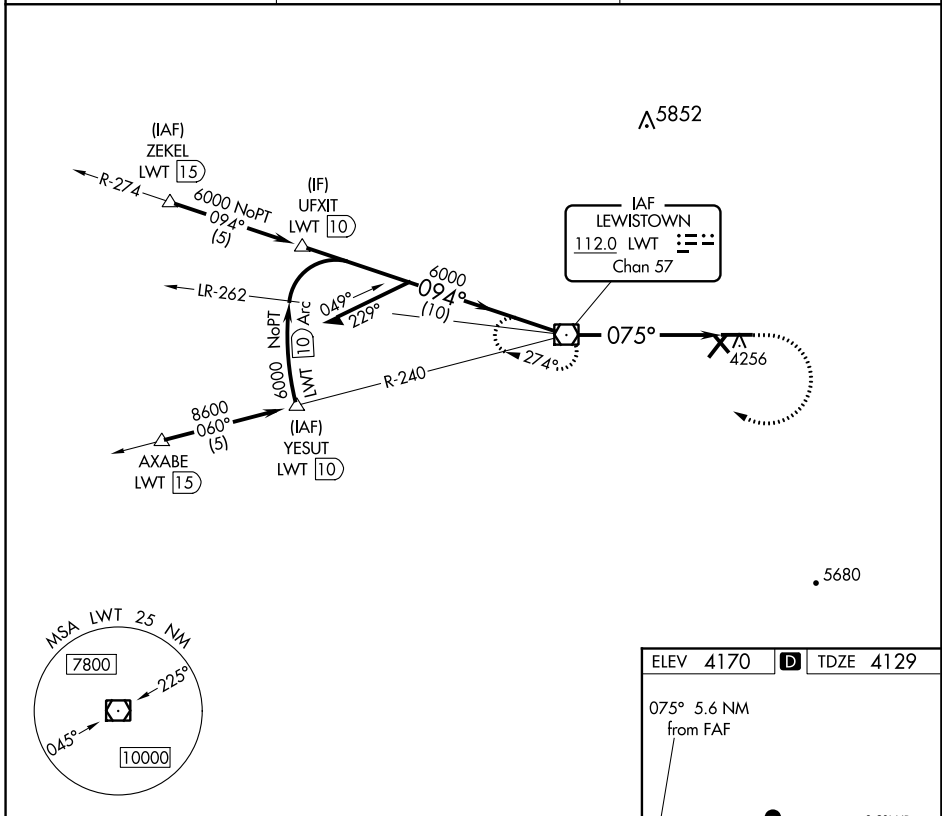
VOR/DME LWT 112.0 Chan 57	APP CRS 075°	Rwy Idg TDZE 4129 Apt Elev 4170	6100
---	------------------------	---	-------------

VOR RWY 8

LEWISTOWN MUNI (LWT)

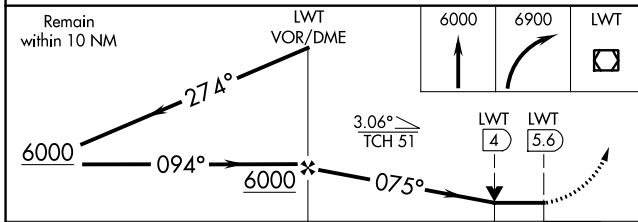
MISSAPPROACH: Climb to 6000 then climbing right turn to 6900 direct LWT VOR/DME and hold.

ASOS 118.375	GREAT FALLS RADIO 122.2	UNICOM 123.0 (CTAF)
------------------------	-----------------------------------	-------------------------------



NW-1, 12 OCT 2017 to 09 NOV 2017

NW-1, 12 OCT 2017 to 09 NOV 2017



ELEV 4170	TDZE 4129
-----------	-----------

075° 5.6 NM from FAF

REIL Rwy 8 and 26	MIRL Rwy 3-21, 8-26 and 13-31				
FAF to MAP 5.6 NM					
Knots	60	90	120	150	180
Min:Sec	5:36	3:44	2:48	2:14	1:52

CATEGORY	A	B	C	D
S-8	4680-1	551 (600-1)	4680-1 5/8	551 (600-1 5/8)
CIRCLING	4680-1 510 (600-1)	4820-1 650 (700-1)	4980-2 1/4 810 (900-2 1/4)	5240-3 1070 (1100-3)