

VOR/DME LAR <b>117.6</b> Chan <b>123</b>	APP CRS <b>292°</b>	Rwy Idg TDZE Apt Elev <b>6300</b> <b>7278</b> <b>7284</b>
--	------------------------	--

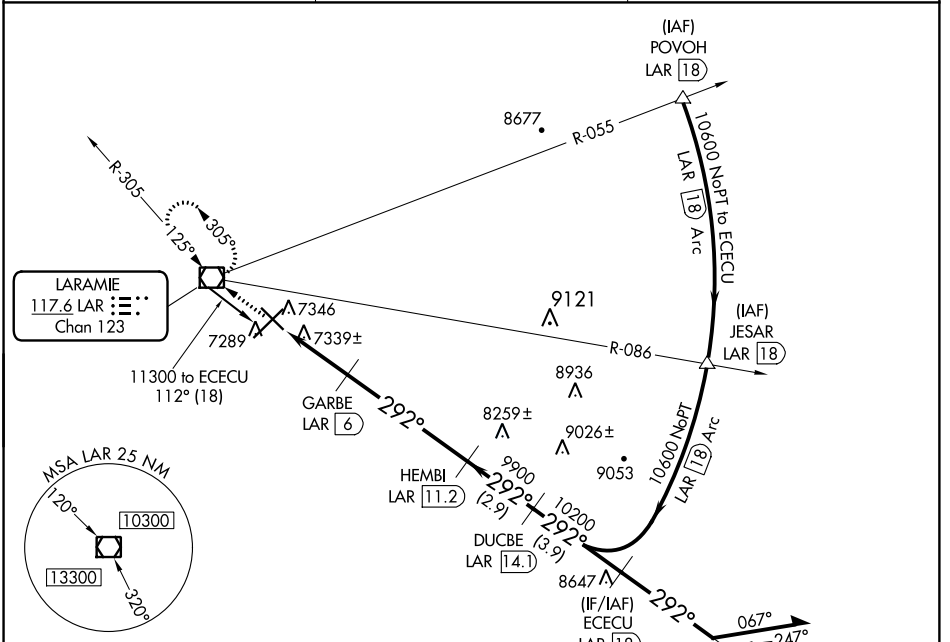
# VOR/DME RWY 30

LARAMIE RGNL (LAR)

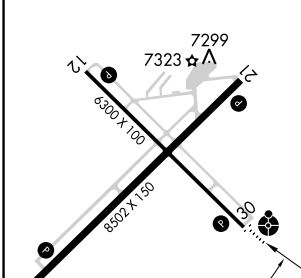
**ODALS** MISSED APPROACH: Climb to 9600 direct LAR VOR/DME and hold, continue climb-in-hold to 9600.

**35°C**

ASOS <b>135.475</b>	DENVER CENTER <b>125.9 284.7</b>	UNICOM <b>123.05 (CTAF)</b>
------------------------	-------------------------------------	--------------------------------



ELEV 7284	<b>D</b>	TDZE 7278
-----------	----------	-----------



REIL Rws 3, 12 and 21 **1**  
MIRL Rws 3-21 and 12-30 **1**

9600	LAR	ECECU LAR 18	Remain within 10 NM	
LAR 3.1	GARBE LAR 6	HEMBI LAR 11.2	DUCBE LAR 14.1	
8220	9900	10200	10600	
0.9	2 NM	5.2 NM	2.9 NM	
3.9 NM				
CATEGORY	A	B	C	D
S-30	7600-¾ 322 (400-¾)		7600-1 322 (400-1)	7840-2 556 (600-2)
CIRCLING	7660-1 376 (400-1)	7740-1 456 (500-1)	7740-1½ 456 (500-1½)	

NW-1, 12 OCT 2017 to 09 NOV 2017

NW-1, 12 OCT 2017 to 09 NOV 2017