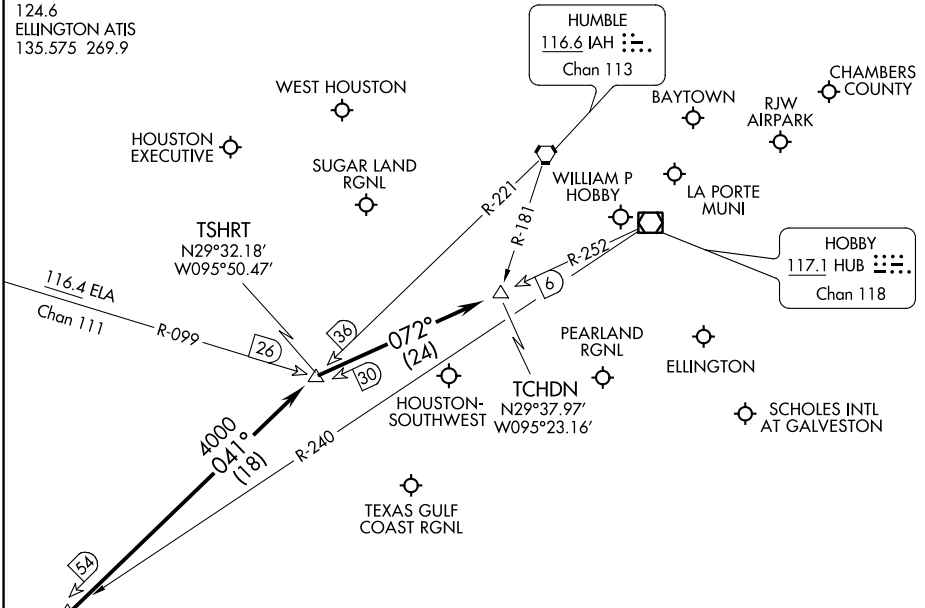


HOUSTON APP CON  
119.17 291.67  
WILLIAM P HOBBY D-ATIS  
124.6  
ELLINGTON ATIS  
135.575 269.9



NOTE: DME/DME/IRU or GPS equipped turbojet and turboprop aircraft landing KHOU must file the BELLR (RNAV) STAR.

BELLR  
N29°19.49'-W096°05.32'  
VERTICAL NAVIGATION  
PLANNING INFORMATION  
TURBOJET:  
Expect 12000 250K

NOTE: Chart not to scale.

ARRIVAL ROUTE DESCRIPTION

SAN ANTONIO TRANSITION (SAT.TCHDN2): From over SAT VORTAC on SAT R-097 to DUUDE INT, then via HUB R-240 to BELLR INT.

Thence . . . .

CORPUS CHRISTI TRANSITION (CRP.TCHDN2): From over CRP VORTAC via CRP R-029 to HYDRL INT, then via IAH R-221 to BELLR INT.

Thence . . . .

PALACIOS TRANSITION (PSX.TCHDN2): From over PSX VORTAC via PSX R-011 to BELLR INT. Thence . . . .

. . . . From over BELLR INT via the IAH R-221 to TSHRT INT, thence via the HUB R-252 to TCHDN INT. Expect vectors to final approach course at or prior to TCHDN INT.

SC-5, 12 OCT 2017 to 09 NOV 2017

SC-5, 12 OCT 2017 to 09 NOV 2017