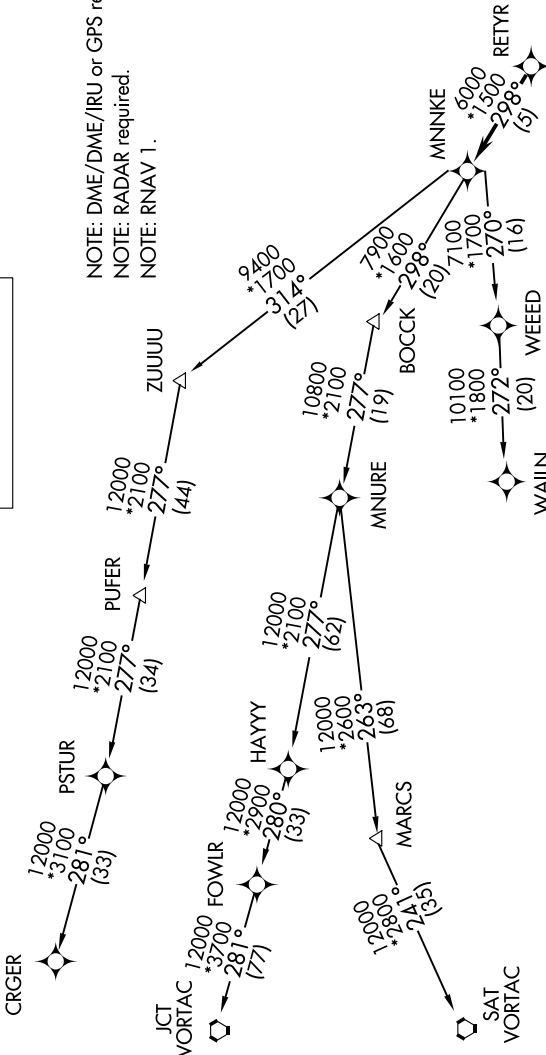


RETYR FIVE DEPARTURE (RNAV)

D-ATIS 124.6
 CLNC DEL 125.45
 CPDLC 125.45
 GND CON 121.9
 HOBBY TOWER 118.7 256.9
 HOUSTON DEP CON 126.67 339.8

NOTE: DME/DME/IRU or GPS required.
 NOTE: RADAR required.
 NOTE: RNAV 1.

**TOP ALTITUDE:
16000**



TAKEOFF MINIMUMS
 Rwy 4, 13L/R, 17, 31L/R, 35:
 Standard with minimum climb of 500' per NM to 560.
 Rwy 22: Standard with minimum climb of 500' per NM to 800.

(NOTES CONTINUED ON FOLLOWING PAGE)

NOTE: Chart not to scale.