

WAAS CH <b>77510</b> <b>W31A</b>	APP CRS <b>311°</b>	Rwy Idg <b>7599</b> TDZE <b>43</b> Apt Elev <b>46</b>
--	------------------------	---

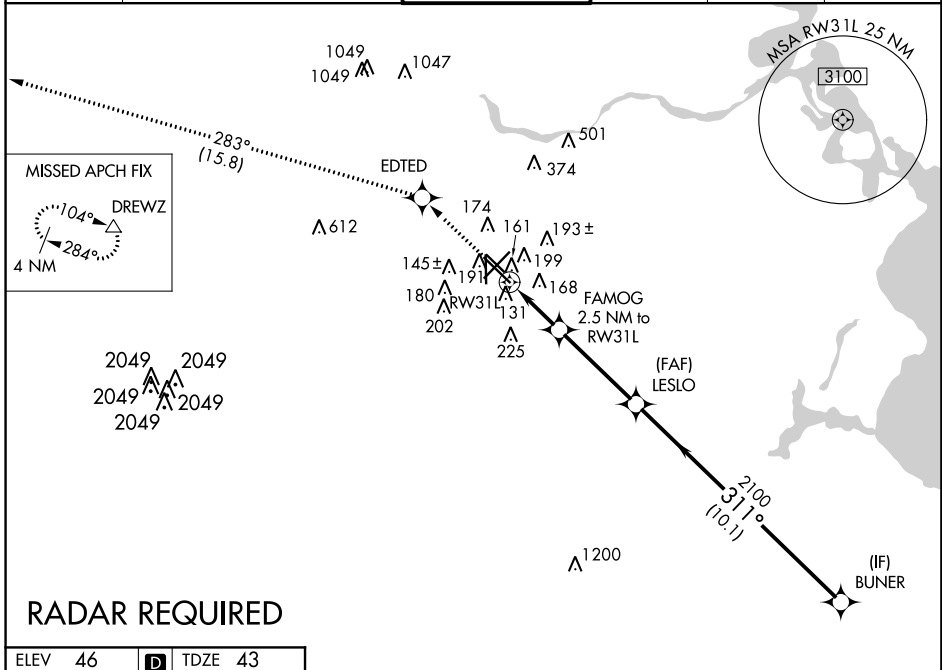
# RNAV (GPS) RWY 31L

WILLIAM P HOBBY (HOU)

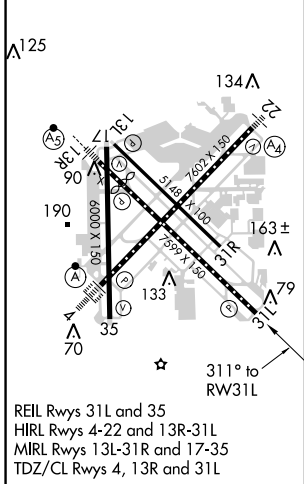
**⚠** For uncompensated Baro-VNAV systems, LNAV/VNAV NA below -1.5°C (5°F) or above 43°C (109°F). DME/DME RNP-0.3 NA.

MISSED APPROACH: Climb to 2000 direct EDTED and on track 283° to DREWZ and hold.

D-ATIS <b>124.6</b>	HOUSTON APP CON <b>120.05 379.1</b> EAST <b>124.35 316.15</b> WEST	HOBBY TOWER <b>118.7 256.9</b>	GND CON <b>121.9</b>	CLNC DEL <b>125.45</b>	CPDLC
------------------------	--	-----------------------------------	-------------------------	---------------------------	-------



ELEV 46	<b>D</b>	TDZE 43
---------	----------	---------



2000	EDTEG	DREWZ	VGSI and RNAV glidepath not coincident (VGSI Angle 3.00/TCH 76).	BUNER
↑	✦	tr 283°		
*LNAV only.				
	FAMOG 2.5 NM to RW31L	LESLO 2100		BUNER 4000
	*1.2 NM to RW31L			
	RW31L			
		*880	2100	
	1.2 NM	1.3	3.8 NM	10.1 NM

CATEGORY	A	B	C	D
LPV DA		243/40	200 (200-¾)	
LNAV/VNAV DA		323/45	280 (300-⅞)	
LNAV MDA	500/55	457 (500-1¼)	500-1⅜	457 (500-1⅜)
<b>C</b> CIRCLING	500-1 454 (500-1)	520-1 474 (500-1)	740-2¼	694 (700-2¼)

SC-5, 12 OCT 2017 to 09 NOV 2017

SC-5, 12 OCT 2017 to 09 NOV 2017