

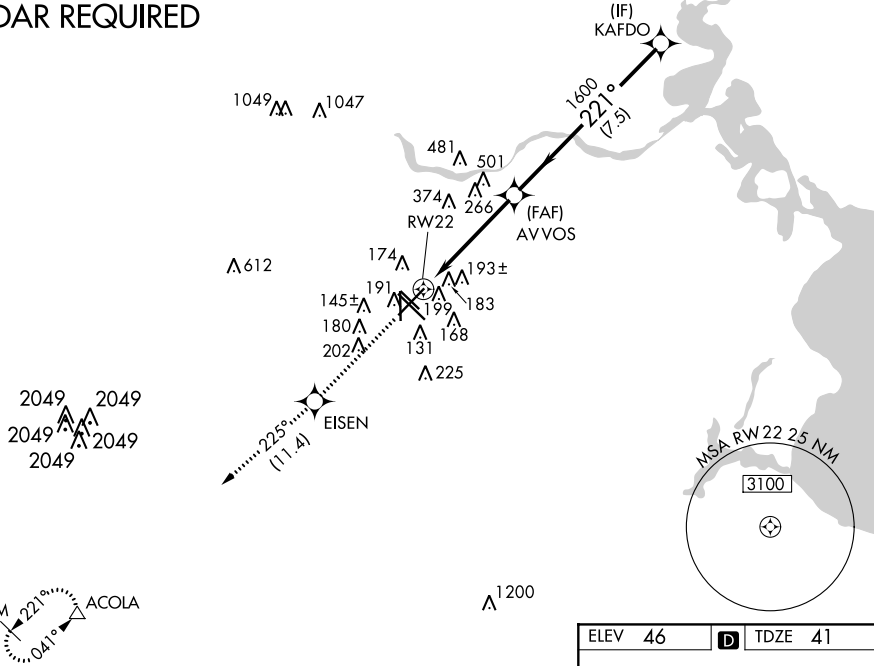
WAAS CH 65610 W22A	APP CRS 221°	Rwy ldg 7602 TDZE 41 Apt Elev 46
--	------------------------	---

RNAV (GPS) RWY 22

WILLIAM P HOBBY (HOU)

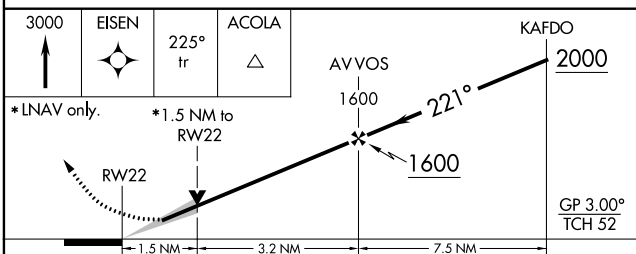
<p>▽ Inop table does not apply to LPV, LNAV/VNAV all Cats, and LNAV Cat C. For uncompensated Baro-VNAV systems, LNAV/VNAV NA below -15°C (5°F) or above 48°C (118°F). DME/DME RNP-0.3 NA.</p> <p>▲</p>	<p>MALS </p> <p>MISSED APPROACH: Climb to 3000 direct EISEN and on track 225° to ACOLA and hold.</p>				
D-ATIS 124.6	HOUSTON APP CON 120.05 379.1 EAST 124.35 316.15 WEST	HOBBY TOWER 118.7 256.9	GND CON 121.9	CLNC DEL 125.45	CPDLC

RADAR REQUIRED

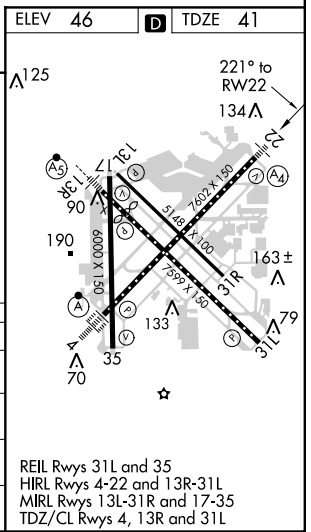


SC-5, 12 OCT 2017 to 09 NOV 2017

SC-5, 12 OCT 2017 to 09 NOV 2017



CATEGORY	A	B	C	D	E
LPV DA	360-1		319 (400-1)		
LNAV/VNAV DA	480-1½		439 (500-1½)		
LNAV MDA	580-¾	539 (600-¾)	580-1½	580-1¾	580-2
			539 (600-1½)	539 (600-1¾)	539 (600-2)
CIRCLING	580-1	534 (600-1)	580-1½	600-2	860-3
			534 (600-1½)	554 (600-2)	814 (900-3)



REIL Rwy 31L and 35
HIRL Rwy 4-22 and 13R-31L
MIRL Rwy 13L-31R and 17-35
TDZ/CL Rwy 4, 13R and 31L