

APP CRS	Rwy Idg 6000
176°	TDZE 46
	Apt Elev 46

RNAV (GPS) RWY 17

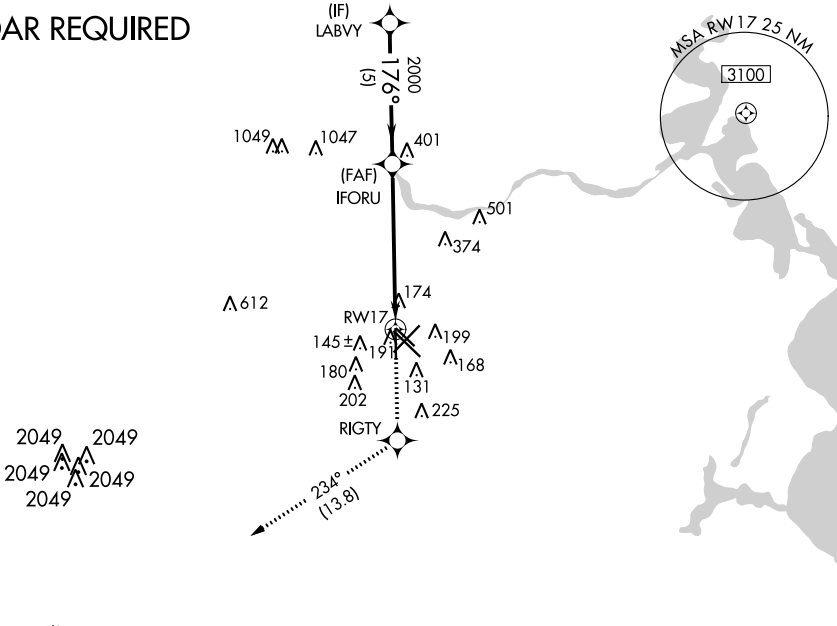
WILLIAM P HOBBY (HOU)

▼ For uncompensated Baro-VNAV systems, LNAV/VNAV NA below -15°C (5°F) or above 43°C (109°F). DME/DME RNP-0.3 NA. Helicopter visibility reduction below ¾ SM NA.

MISSED APPROACH: Climb to 3000 direct RIGTY and on track 234° to ACOLA and hold.

D-ATIS	HOUSTON APP CON	HOBBY TOWER	GND CON	CLNC DEL	CPDLC
124.6	120.05 379.1 EAST 124.35 316.15 WEST	118.7 256.9	121.9	125.45	

RADAR REQUIRED



SC-5, 12 OCT 2017 to 09 NOV 2017

SC-5, 12 OCT 2017 to 09 NOV 2017

	ELEV 46	TDZE 46				
	LABVY	IFORU	3000	RIGTY	tr 234°	ACOLA
	2000	2000	2000			
	GP 3.00° TCH 40		*1.6 NM to RWY 17		*LNAV only.	
	5 NM		4.3 NM	1.6 NM		
CATEGORY	A	B	C	D		
LNAV/VNAV DA	480-1½		434 (500-1½)			
LNAV MDA	580-1	534 (600-1)	580-1½	580-1¾	534 (600-1¾)	
CIRCLING	580-1	534 (600-1)	580-1½	600-2	554 (600-2)	

REIL Rwys 311 and 35R
HIRL Rwys 4-22 and 13R-31L
MIRL Rwys 13L-31R and 17-35
TDZ/CL Rwys 4, 13R and 31L