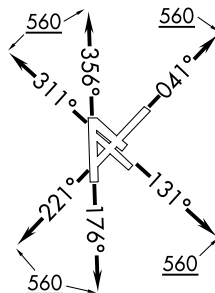


D-ATIS
124.6
CLNC DEL
125.45
CPDLC
GND CON
121.9
HOBBY TOWER
118.7 256.9
HOUSTON DEP CON
127.125 269.075

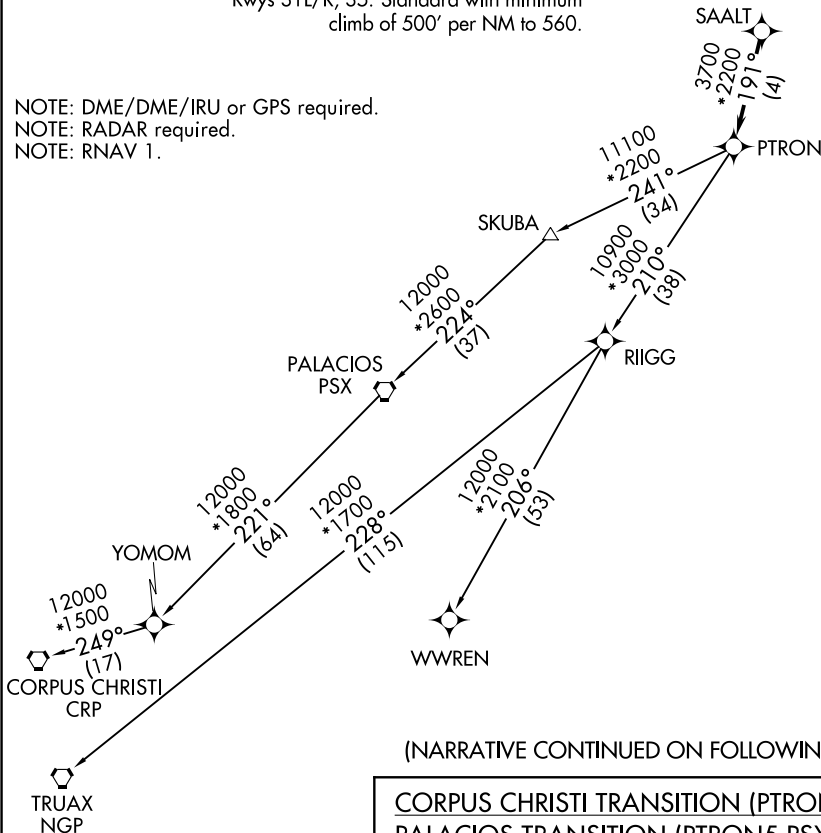
**TOP ALTITUDE:
16000**

TAKEOFF MINIMUMS

- Rwy 4: Standard with minimum climb of 500' per NM to 900.
- Rwy 13L: Standard with minimum climb of 500' per NM to 3600.
- Rwy 13R: Standard with minimum climb of 500' per NM to 3800.
- Rwy 17: Standard with minimum climb of 500' per NM to 3500.
- Rwy 22: Standard with minimum climb of 500' per NM to 1900.
- Rwys 31L/R, 35: Standard with minimum climb of 500' per NM to 560.



NOTE: DME/DME/IRU or GPS required.
NOTE: RADAR required.
NOTE: RNAV 1.



(NARRATIVE CONTINUED ON FOLLOWING PAGE)

- CORPUS CHRISTI TRANSITION (PTRON5.CRP)
- PALACIOS TRANSITION (PTRON5.PSX)
- TRUAX TRANSITION (PTRON5.NGP)
- WWREN TRANSITION (PTRON5.WWREN)
- YOMOM TRANSITION (PTRON5.YOMOM)

NOTE: Chart not to scale.