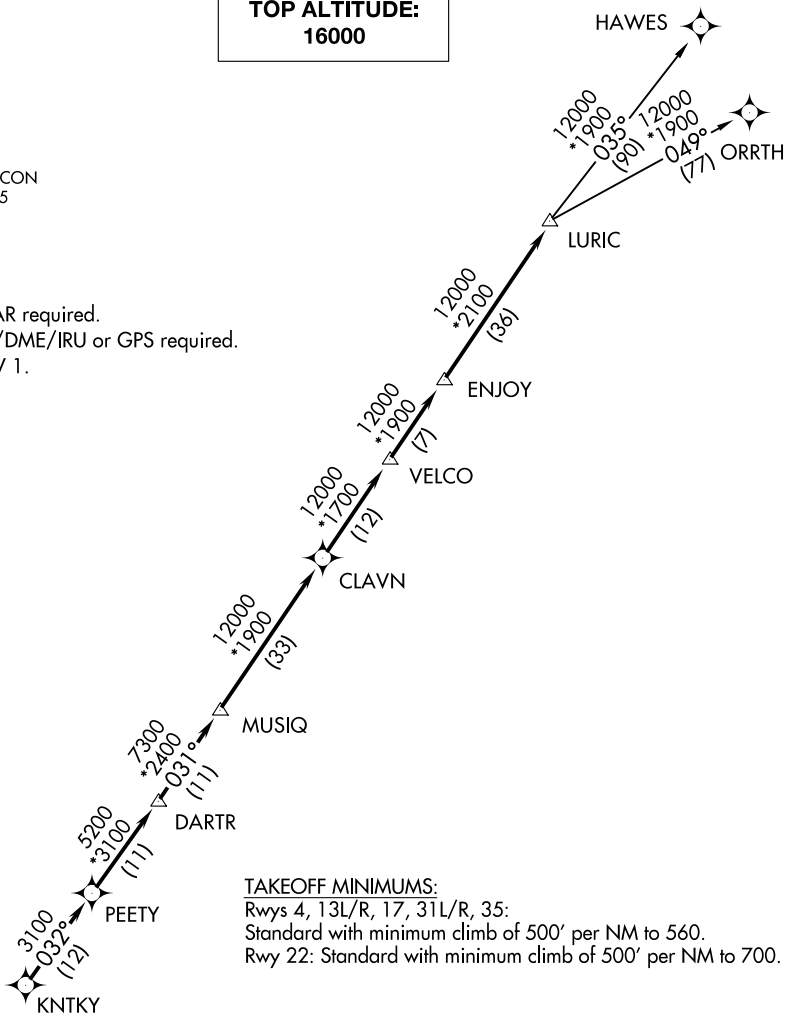


D-ATIS
 124.6
 CLNC DEL
 125.45
 CPDLC
 GND CON
 121.9
 HOBBY TOWER
 118.7 256.9
 HOUSTON DEP CON
 132.25 285.425

**TOP ALTITUDE:
 16000**

NOTE: RADAR required.
 NOTE: DME/DME/IRU or GPS required.
 NOTE: RNAV 1.

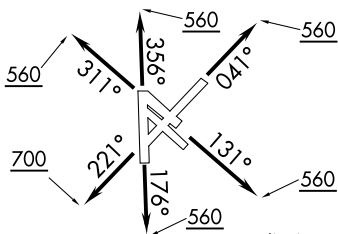


TAKEOFF MINIMUMS:

Rwys 4, 13L/R, 17, 31L/R, 35:

Standard with minimum climb of 500' per NM to 560.

Rwy 22: Standard with minimum climb of 500' per NM to 700.



(NARRATIVE ON FOLLOWING PAGE)
 (NOTES CONTINUED ON FOLLOWING PAGE)

NOTE: Chart not to scale

SC-5, 12 OCT 2017 to 09 NOV 2017

SC-5, 12 OCT 2017 to 09 NOV 2017