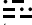



# LEONA THREE DEPARTURE

AL-198 (FAA)

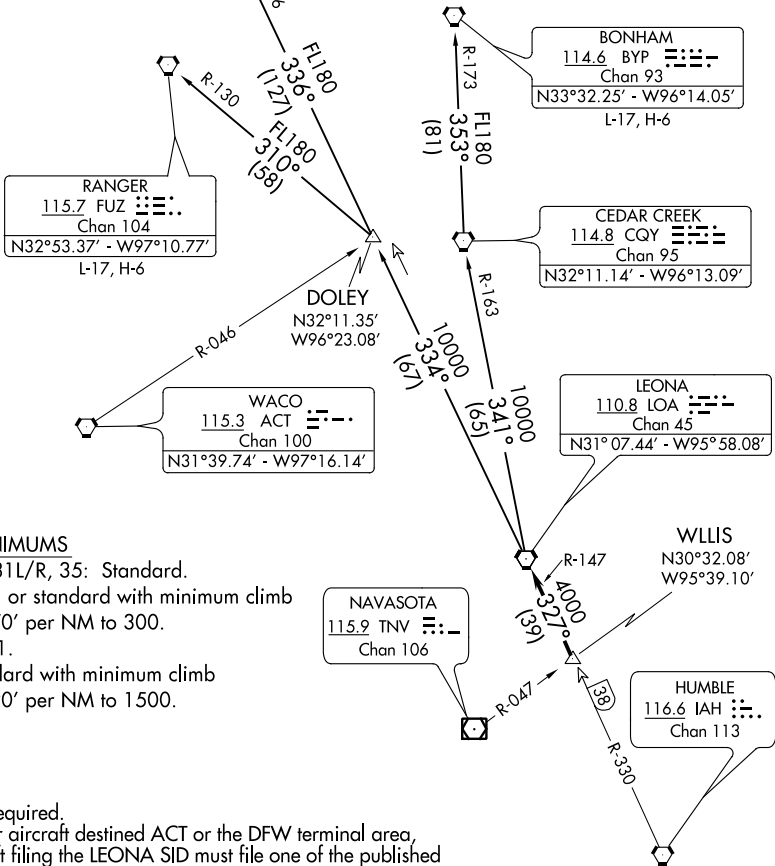
WILLIAM P HOBBY (HOU)  
HOUSTON, TEXAS

**TOP ALTITUDE: 16000**

ARDMORE  
116.7 ADM   
Chan 114  
N34°12.69' - W97°10.10'  
L-17, H-6

TULSA  
114.4 TUL   
Chan 91  
N36°11.78' - W95°47.29'

D-ATIS  
124.6  
CLNC DEL  
125.45  
CPDLC  
HOUSTON DEP CON  
132.25 285.425  
GND CON  
121.9  
HOBBY TOWER  
118.7 256.9



### TAKEOFF MINIMUMS

- Rwys 13L/R, 31L/R, 35: Standard.
- Rwy 4: 300-1 or standard with minimum climb of 270' per NM to 300.
- Rwy 17: 300-1.
- Rwy 22: Standard with minimum climb of 290' per NM to 1500.

NOTE: RADAR required.

NOTE: Except for aircraft destined ACT or the DFW terminal area, all aircraft filing the LEONA SID must file one of the published transitions via FUZ (LOA3.FUZ) ADM (LOA3.ADM) or BYP (LOA3.BYP).

NOTE: RANGER TRANSITION: For aircraft overflying west/northwest of the DFW terminal area FL240 and above.

NOTE: ARDMORE TRANSITION: For aircraft overflying north/northwest of the DFW terminal area FL240 and above.

NOTE: BONHAM TRANSITION: For aircraft overflying/landing TUL VORTAC FL240 and above.

(NARRATIVE ON FOLLOWING PAGE)

(NOTES CONTINUED ON FOLLOWING PAGE)

NOTE: Chart not to scale.