

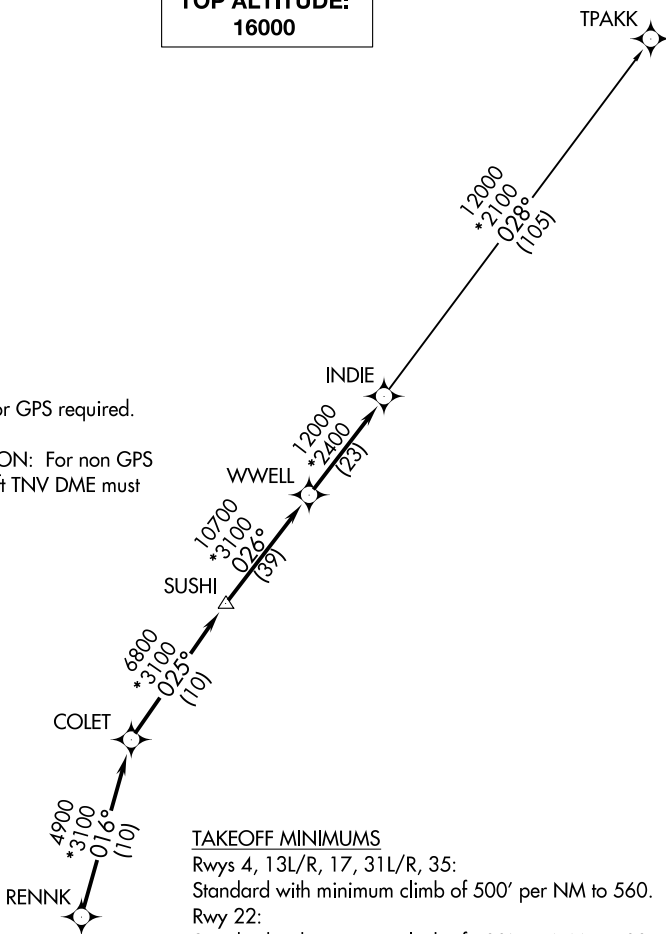
INDIE FIVE DEPARTURE (RNAV)

**TOP ALTITUDE:
16000**

D-ATIS 124.6
CLNC DEL
125.45
CPDLC
GND CON
121.9
HOBBY TOWER
118.7 256.9
HOUSTON DEP CON
132.25 285.425

TPAKK

- NOTE: RADAR required.
- NOTE: DME/DME/IRU or GPS required.
- NOTE: RNAV 1.
- NOTE: TPAKK TRANSITION: For non GPS equipped aircraft TNV DME must be operational.



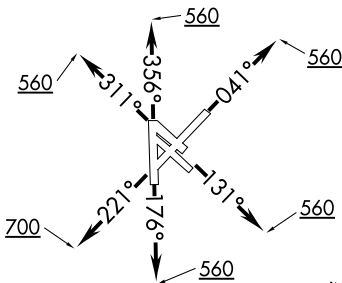
TAKEOFF MINIMUMS

Rwys 4, 13L/R, 17, 31L/R, 35:

Standard with minimum climb of 500' per NM to 560.

Rwy 22:

Standard with minimum climb of 500' per NM to 700.



(NARRATIVE ON FOLLOWING PAGE)
(NOTES CONTINUED ON FOLLOWING PAGE)

NOTE: Chart not to scale.

SC-5, 12 OCT 2017 to 09 NOV 2017

SC-5, 12 OCT 2017 to 09 NOV 2017