

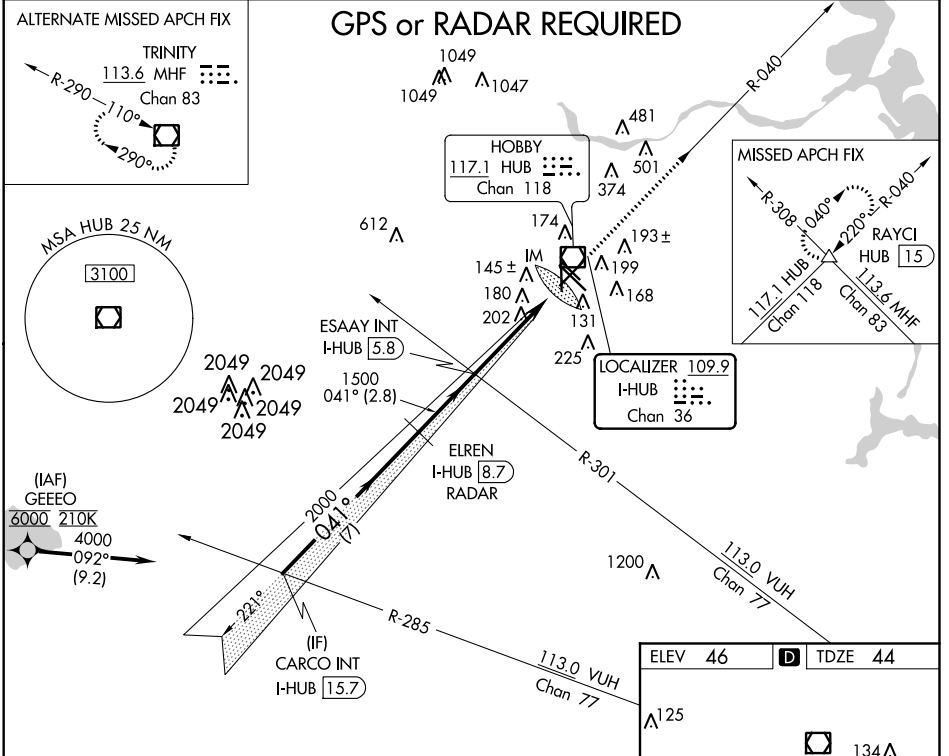
LOC/DME I-HUB <b>109.9</b> Chan 36	APP CRS <b>041°</b>	Rwy Idg TDZE <b>44</b> Apt Elev <b>46</b>	<b>7602</b>
--	------------------------	---	-------------

# ILS RWY 4 (CAT II & III)

WILLIAM P HOBBY (HOU)

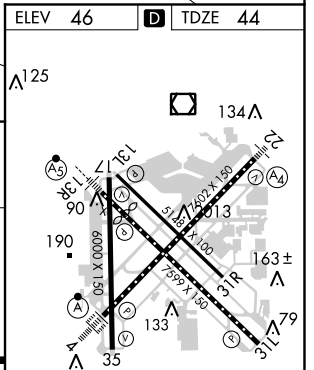
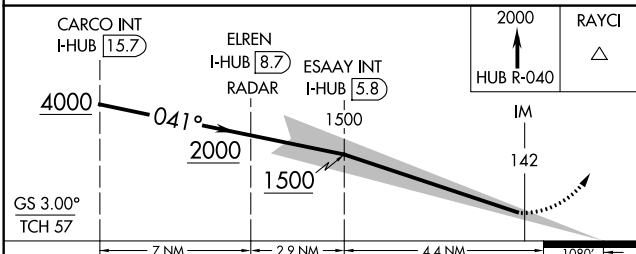
<b>▽</b> CAT II: RVR 1000 authorized with specific OPSPEC, MSPEC, or LOA approval and use of autoland or HUD to touchdown.	ALSF-2 <b>(A)</b>	MISSED APPROACH: Climb to 2000 on HUB VOR/DME R-040 RAYCI INT/HUB 1.5 DME and hold.
--	----------------------	---

D-ATIS <b>124.6</b>	HOUSTON APP CON <b>120.05 379.1 EAST</b> <b>124.35 316.15 WEST</b>	HOBBY TOWER <b>118.7 256.9</b>	GND CON <b>121.9</b>	CLNC DEL <b>125.45</b>	CPDLC
------------------------	--	-----------------------------------	-------------------------	---------------------------	-------



SC-5, 12 OCT 2017 to 09 NOV 2017

SC-5, 12 OCT 2017 to 09 NOV 2017



CATEGORY	A	B	C	D
S-ILS 4	CAT II RA 100/12		100 DA 144	
S-ILS 4	CAT III		RVR 06	

## CATEGORY II & III ILS - SPECIAL AIRCREW & AIRCRAFT CERTIFICATION REQUIRED

REIL Rwy 31L and 35  
MIRL Rwy 13L-31R and 17-35  
HIRL Rwy 4-22 and 13R-31L  
TDZ/CL Rwy 4, 13R and 31L