

ELOCO FOUR DEPARTURE (RNAV)

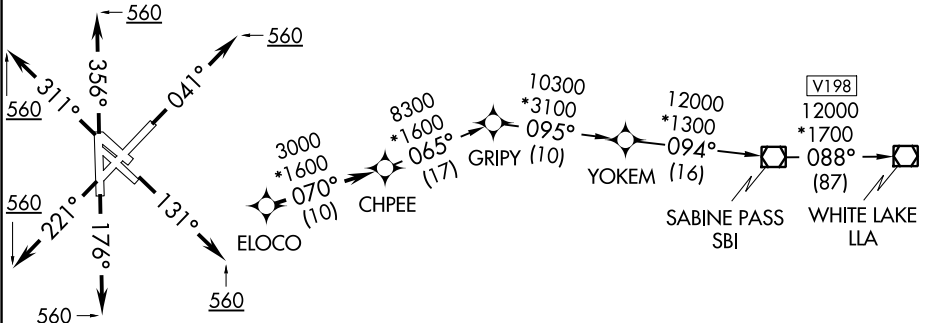
TOP ALTITUDE:
16000

TAKEOFF MINIMUMS

Rwys 4, 13L/R, 17, 22, 31L/R, 35:

Standard with minimum climb of 500' per NM to 560.

D-ATIS
124.6
CLNC DEL
125.45
CPDLC
GND CON
121.9
HOBBY TOWER
118.7 256.9
HOUSTON DEP CON
127.125 269.075



- NOTE: DME/DME/IRU or GPS required.
- NOTE: RADAR required.
- NOTE: RNAV 1.

(NOTES CONTINUED ON FOLLOWING PAGE)

NOTE: Chart not to scale.

DEPARTURE ROUTE DESCRIPTION

TAKEOFF RWY 4: Climb heading 041° to 560, expect RADAR vectors to ELOCO, thence

TAKEOFF RWYS 13L/R: Climb heading 131° to 560, expect RADAR vectors to ELOCO, thence

TAKEOFF RWY 17: Climb heading 176° to 560, expect RADAR vectors to ELOCO, thence

TAKEOFF RWY 22: Climb heading 221° to 560, expect RADAR vectors to ELOCO, thence

TAKEOFF RWYS 31L/R: Climb heading 311° to 560, expect RADAR vectors to ELOCO, thence

TAKEOFF RWY 35: Climb heading 356° to 560, expect RADAR vectors to ELOCO, thence

. . . . on track 070° to CHPEE, then on (transition). Maintain 16000, expect filed altitude 10 minutes after departure.

WHITE LAKE TRANSITION (ELOCO4.LLA)