

EL DORADO NINE DEPARTURE

D-ATIS
124.6
CLNC DEL
125.45
CPDLC
GND CON
121.9
HOBBY TOWER
118.7 256.9
HOUSTON DEP CON
132.25 285.425

TOP ALTITUDE:
16000

EL DORADO
115.5 ELD
Chan 102
N33°15.37'-W92°44.64'
L-17, H-6

NOTE: RADAR required.
NOTE: For aircraft destined MEM
or filed via Q32 or J42.

LUFKIN
112.1 LFK
Chan 58

ENJOY
N31°16.73'
W94°19.82'

MUSIQ
N30°33.17'
W94°53.53'

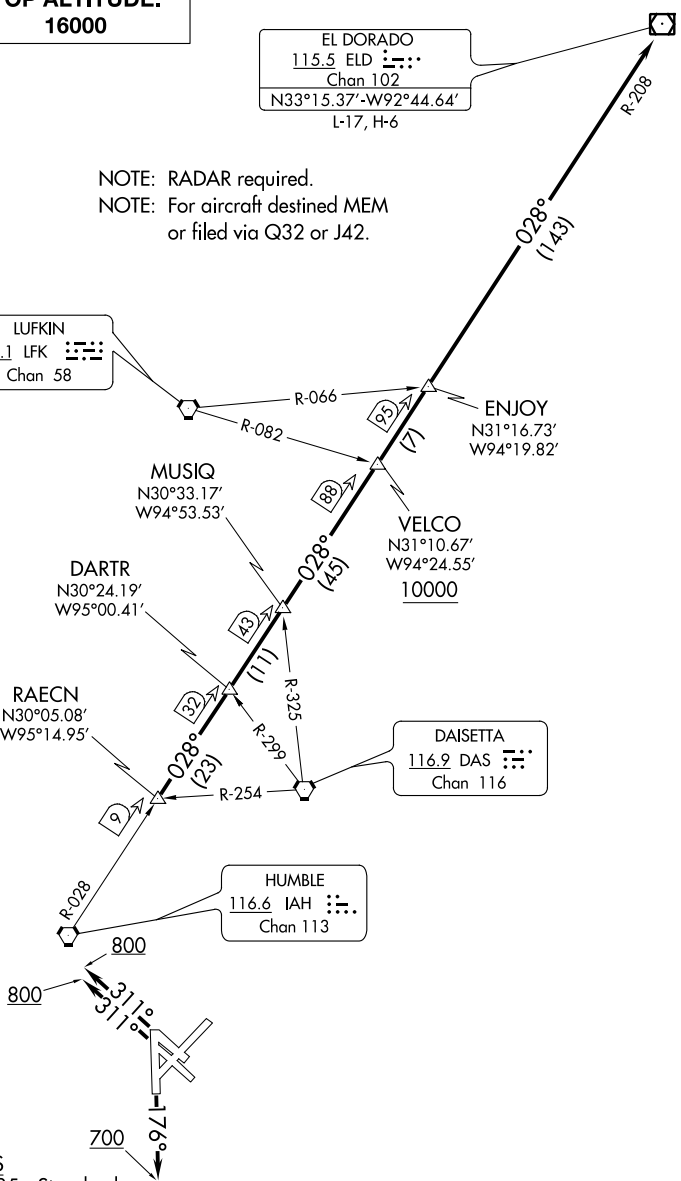
VELCO
N31°10.67'
W94°24.55'
10000

DARTR
N30°24.19'
W95°00.41'

RAECN
N30°05.08'
W95°14.95'

DAISETTA
116.9 DAS
Chan 116

HUMBLE
116.6 IAH
Chan 113



TAKEOFF MINIMUMS
Rwys 13L/R, 31L/R, 35: Standard.
Rwy 4: 300-1 or standard with minimum climb of 270' per NM to 300.
Rwy 17: 300-1.
Rwy 22: Standard with minimum climb of 290' per NM to 1500.

(NOTES CONTINUED ON FOLLOWING PAGE)
(NARRATIVE ON FOLLOWING PAGE)

NOTE: Chart not to scale.

SC-5, 12 OCT 2017 to 09 NOV 2017

SC-5, 12 OCT 2017 to 09 NOV 2017