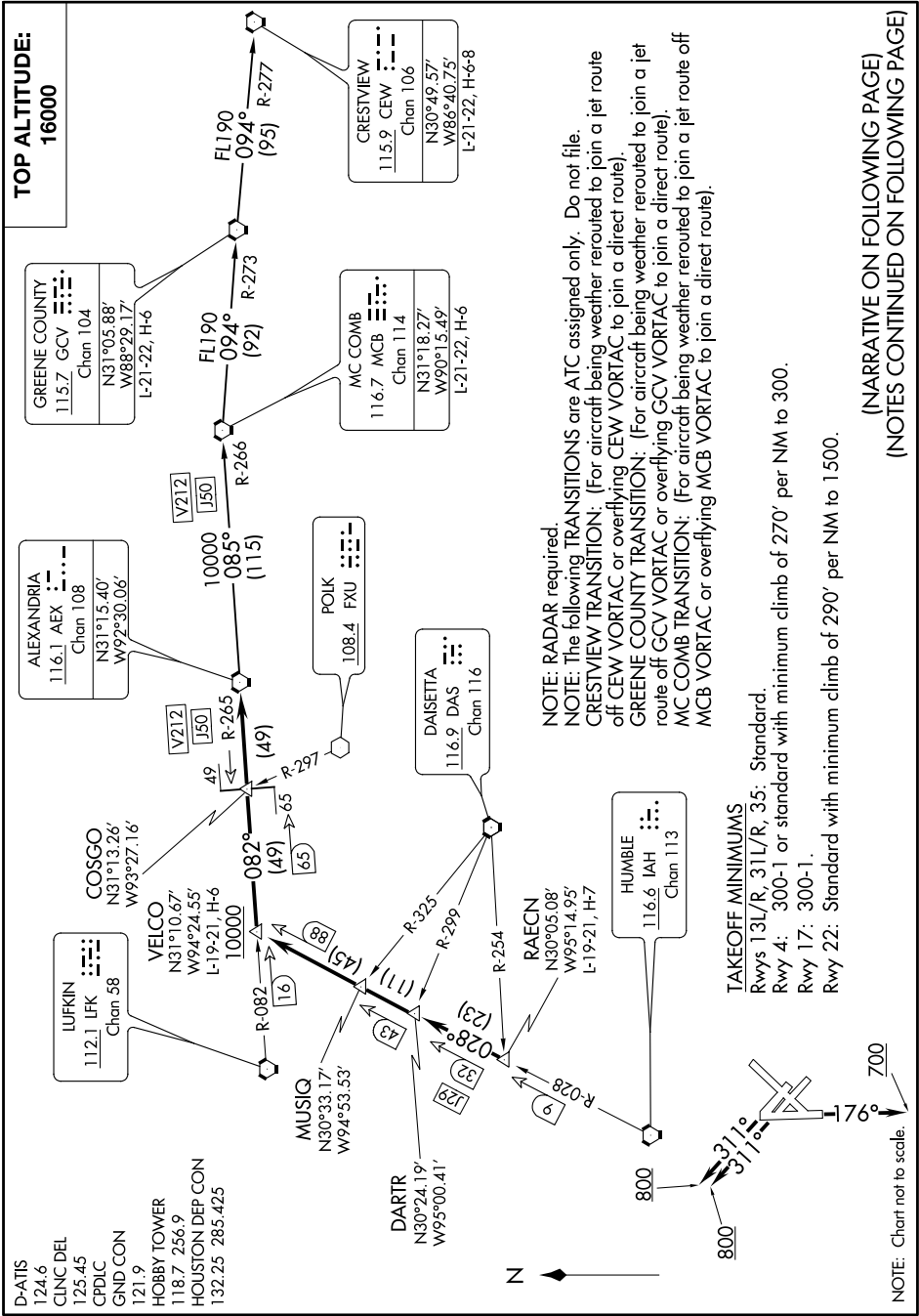


ALEXANDRIA ONE DEPARTURE

SC-5, 12 OCT 2017 to 09 NOV 2017



- D-ATIS 124.6
- CLNC DEL 125.45
- CPDLC 121.9
- GND CON 121.9
- HOBBY TOWER 118.7 256.9
- HOUSTON DEP CON 132.25 285.425

NOTE: RADAR required
NOTE: The following TRANSITIONS are ATC assigned only. Do not file.
CRESTVIEW TRANSITION: (For aircraft being weather routed to join a jet route off CEW VORTAC or overflying CEW VORTAC to join a direct route).
GREENE COUNTY TRANSITION: (For aircraft being weather routed to join a jet route off GCV VORTAC or overflying GCV VORTAC to join a direct route).
MC COMB TRANSITION: (For aircraft being weather routed to join a jet route off MCB VORTAC or overflying MCB VORTAC to join a direct route).

TAKEOFF MINIMUMS
 Rwy 5 13L/R, 31L/R, 35: Standard.
 Rwy 4: 300-1 or standard with minimum climb of 270' per NM to 300.
 Rwy 17: 300-1.
 Rwy 22: Standard with minimum climb of 290' per NM to 1500.

(NARRATIVE ON FOLLOWING PAGE)
 (NOTES CONTINUED ON FOLLOWING PAGE)

ALEXANDRIA ONE DEPARTURE

SC-5, 12 OCT 2017 to 09 NOV 2017