

VORTAC CZQ 112.9 Chan 76	APP CRS 347°	Rwy Idg TDZE Apt Elev	N/A N/A 280
--	------------------------	-----------------------------	--

VOR/DME or GPS-C
FRESNO CHANDLER EXECUTIVE (FCH)

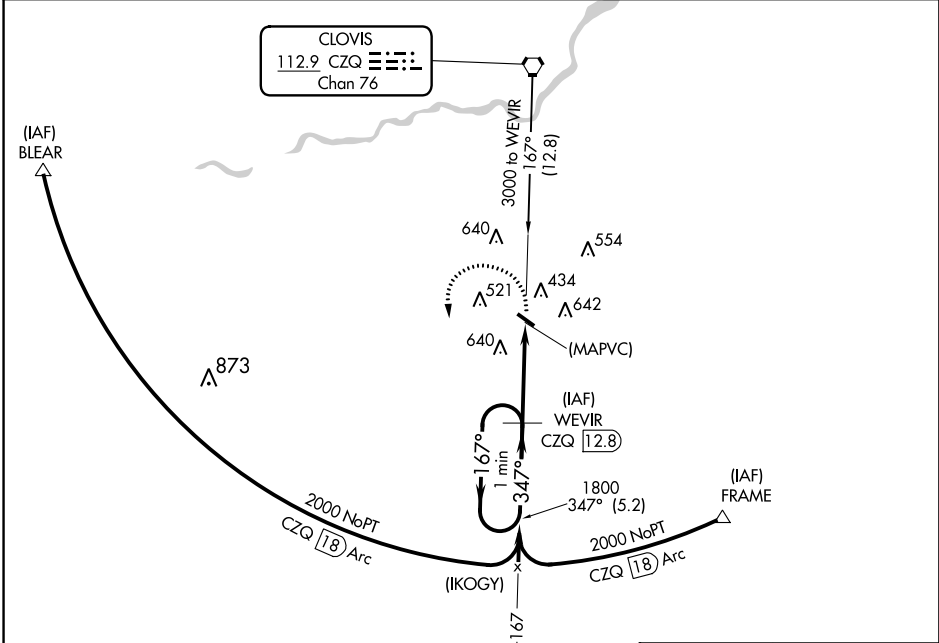
▼ If local altimeter setting not received, use Fresno Yosemite Intl altimeter setting and increase MDA 20 feet.

MISSED APPROACH: Climbing left turn to 2000 via R-167 to WEVIR 12.8 DME and hold.

AWOS-3
135.225

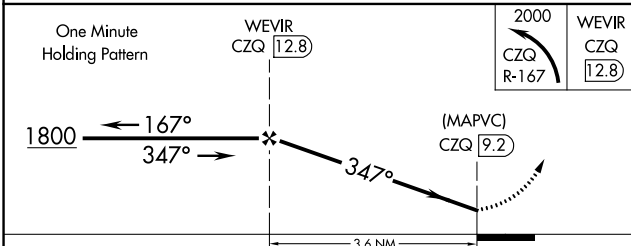
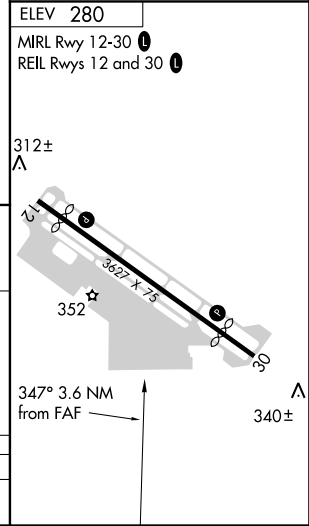
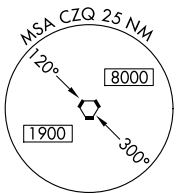
FRESNO APP CON
119.0 323.25

UNICOM
123.0 (CTAF) 1



SW-2, 12 OCT 2017 to 09 NOV 2017

SW-2, 12 OCT 2017 to 09 NOV 2017



CATEGORY	A	B	C	D
CIRCLING	1020-1	740 (800-1)	1020-2 740 (800-2)	NA