

APP CRS <b>111°</b>	Rwy Idg <b>3212</b>
	TDZE <b>280</b>
	Apt Elev <b>280</b>

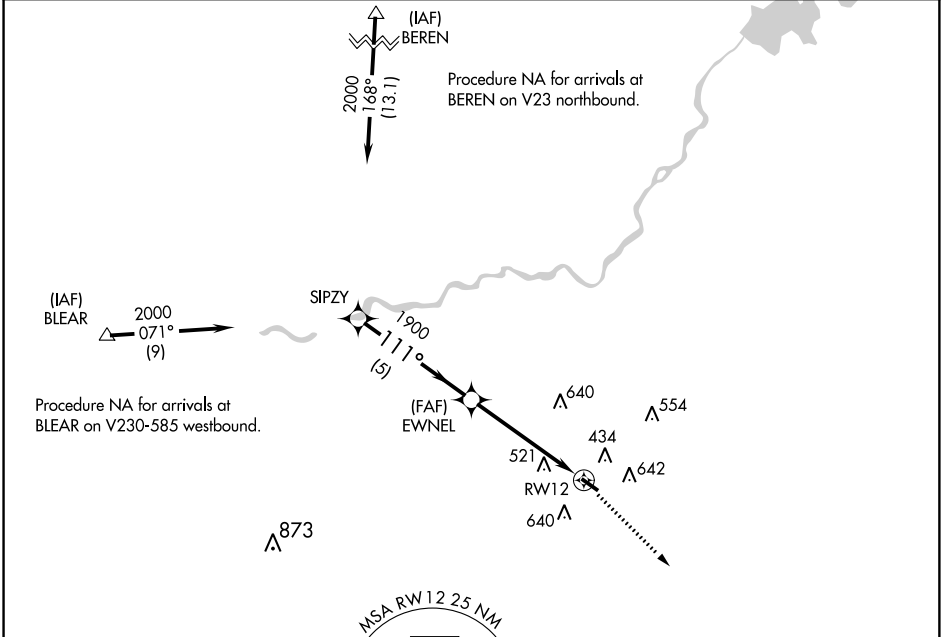
# GPS RWY 12

FRESNO CHANDLER EXECUTIVE (FCH)

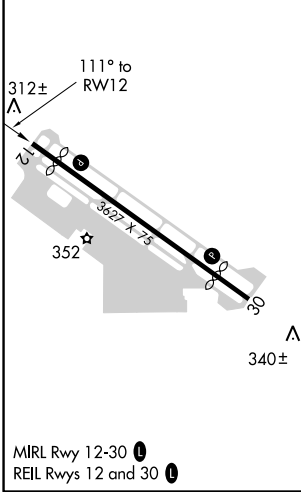
**NA** If local altimeter setting not received, use Fresno Yosemite Init altimeter setting and increase all MDAs 20 feet. Helicopter visibility reduction below 3/4 SM NA.

**MISSED APPROACH:** Climbing right turn to 2000 direct FRAME WP and hold.

AWOS-3 <b>135.225</b>	FRESNO APP CON <b>119.0 323.25</b>	UNICOM <b>123.0 (CTAF) 0</b>
--------------------------	---------------------------------------	---------------------------------



ELEV 280	TDZE 280
----------	----------



2000	FRAME $\triangle$
<p>5 NM      5 NM</p>	

CATEGORY	A	B	C	D
S-12	820-1	540 (600-1)	820-1½ 540 (600-1½)	NA
CIRCLING	1020-1	740 (800-1)	1020-2 740 (800-2)	NA

# GPS RWY 12

SW-2, 12 OCT 2017 to 09 NOV 2017

SW-2, 12 OCT 2017 to 09 NOV 2017