

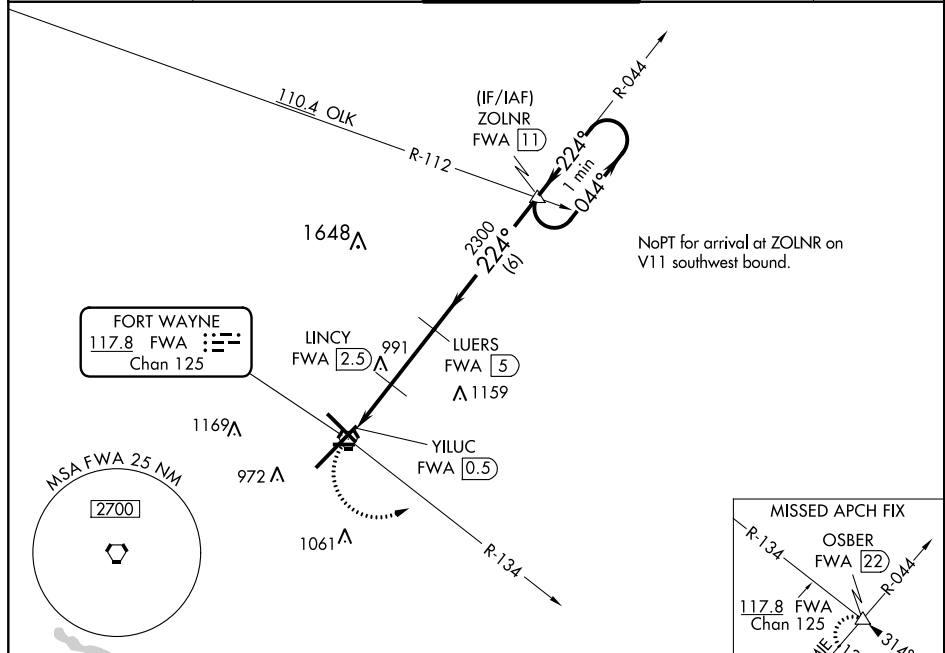
VORTAC FWA <b>117.8</b> Chan 125	APP CRS <b>224°</b>	Rwy Idg TDZE Apt Elev	<b>11981</b> <b>799</b> <b>815</b>
--	------------------------	-----------------------------	--

# VOR or TACAN RWY 23

FORT WAYNE INTL (FWA)

<b>ASR</b>		MISSED APPROACH: Climbing left turn to 3000 on FWA VORTAC R-134 to OSBER INT/FWA 22 DME and hold.		
------------	--	---	--	--

ATIS <b>121.25 349.0</b>	FORT WAYNE APP CON <b>127.2 284.6</b>	FORT WAYNE TOWER <b>119.1 269.325</b>	GND CON <b>121.9 348.6</b>	CLNC DEL <b>124.75</b>
-----------------------------	--	--	-------------------------------	---------------------------



NoPT for arrival at ZOLNR on V11 southwest bound.

ELEV 815	<b>D</b>	TDZE 799
----------	----------	----------

224° to FWA VORTAC

833 A, 863 A, 891 A, 879 A, 863 A, 921±

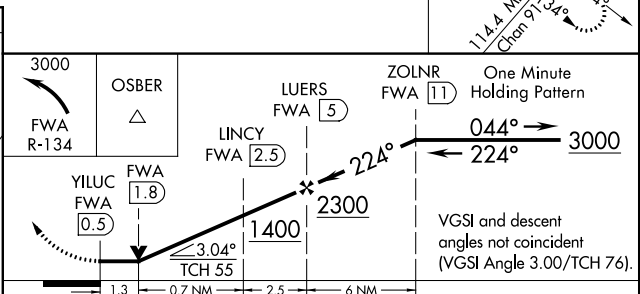
8002 X 150 DOWN, 0.35, 4001 X 75, 27, 1991 X 1159, 11981

TWR 1000

TDZ/CL Rwy 5  
REIL Rws 14 and 23  
HIRL Rws 5-23 and 14-32

FAF to MAP 4.5 NM

Knots	60	90	120	150	180
Min:Sec	4:30	3:00	2:15	1:48	1:30



CATEGORY	A	B	C	D	E
S-23	1400/55	601 (600-1¼)	1400-1¾	601 (600-1¾)	
<b>C</b> CIRCLING	1400-1	585 (600-1)	1420-1¾ 605 (700-1¾)	1520-2¼ 705 (800-2¼)	1520-2½ 705 (800-2½)
LINCYN FIX MINIMUMS					
S-23	1300/55	501 (500-1¼)	1300-1¾	501 (500-1¾)	
<b>C</b> CIRCLING	1300-1	485 (500-1)	1420-1¾ 605 (700-1¾)	1520-2¼ 705 (800-2¼)	1520-2½ 705 (800-2½)

EC-2, 12 OCT 2017 to 09 NOV 2017

EC-2, 12 OCT 2017 to 09 NOV 2017