

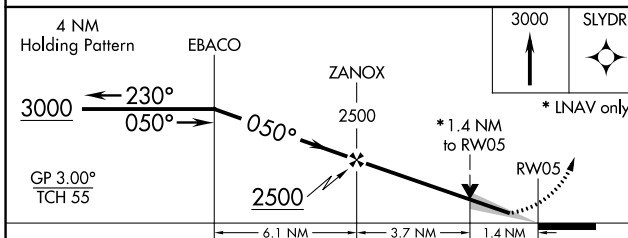
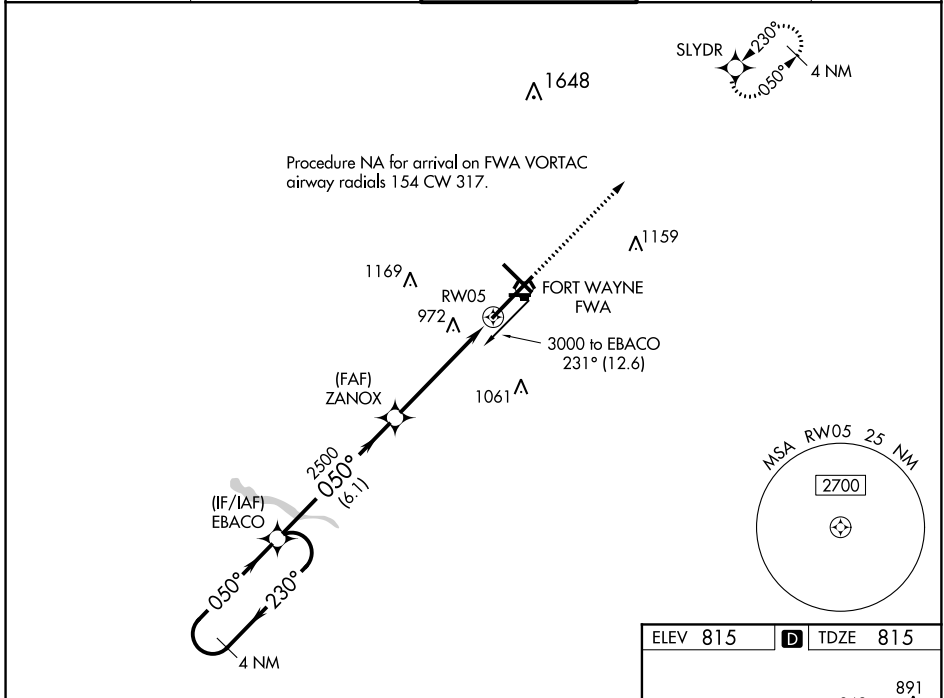
WAAS CH 93609 W05A	APP CRS 050°	Rwy Idg 11981 TDZE 815 Apt Elev 815
--	------------------------	--

RNAV (GPS) RWY 5

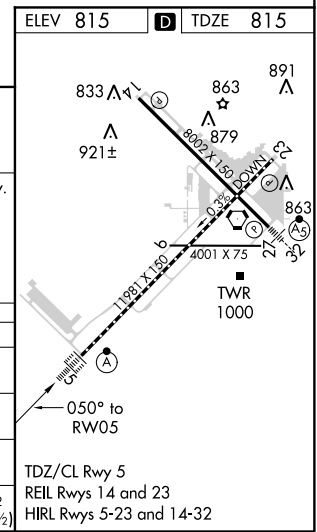
FORT WAYNE INTL (FWA)

<p>For uncompensated Baro-VNAV systems, procedure NA below -16°C (4°F) or above 47°C (116°F). DME/DME RNP-0.3 NA. For inop ALS, increase LPV Cat E visibility to RVR 4000, LNAV/VNAV all Cats visibility to 1½ SM and LNAV Cat C/D/E visibility to 1¾ SM.</p>	<p>ALS-F-2</p>	<p>MISSED APPROACH: Climb to 3000 direct SLYDR and hold.</p>
	<p>ASR</p>	

ATIS 121.25 349.0	FORT WAYNE APP CON 127.2 284.6	FORT WAYNE TOWER 119.1 269.325	GND CON 121.9 348.6	CLNC DEL 124.75
-----------------------------	--	--	-------------------------------	---------------------------



CATEGORY	A	B	C	D	E
LPV DA		1065/18	250 (300-½)		
LNAV/VNAV DA		1275/60	460 (500-1¼)		
LNAV MDA	1300/24	485 (500-½)	1300/50	485 (500-1)	
CIRCLING	1300-1	485 (500-1)	1420-1¾ 605 (700-1¾)	1520-2¼ 705 (800-2¼)	1520-2½ 705 (800-2½)



EC-2, 12 OCT 2017 to 09 NOV 2017

EC-2, 12 OCT 2017 to 09 NOV 2017